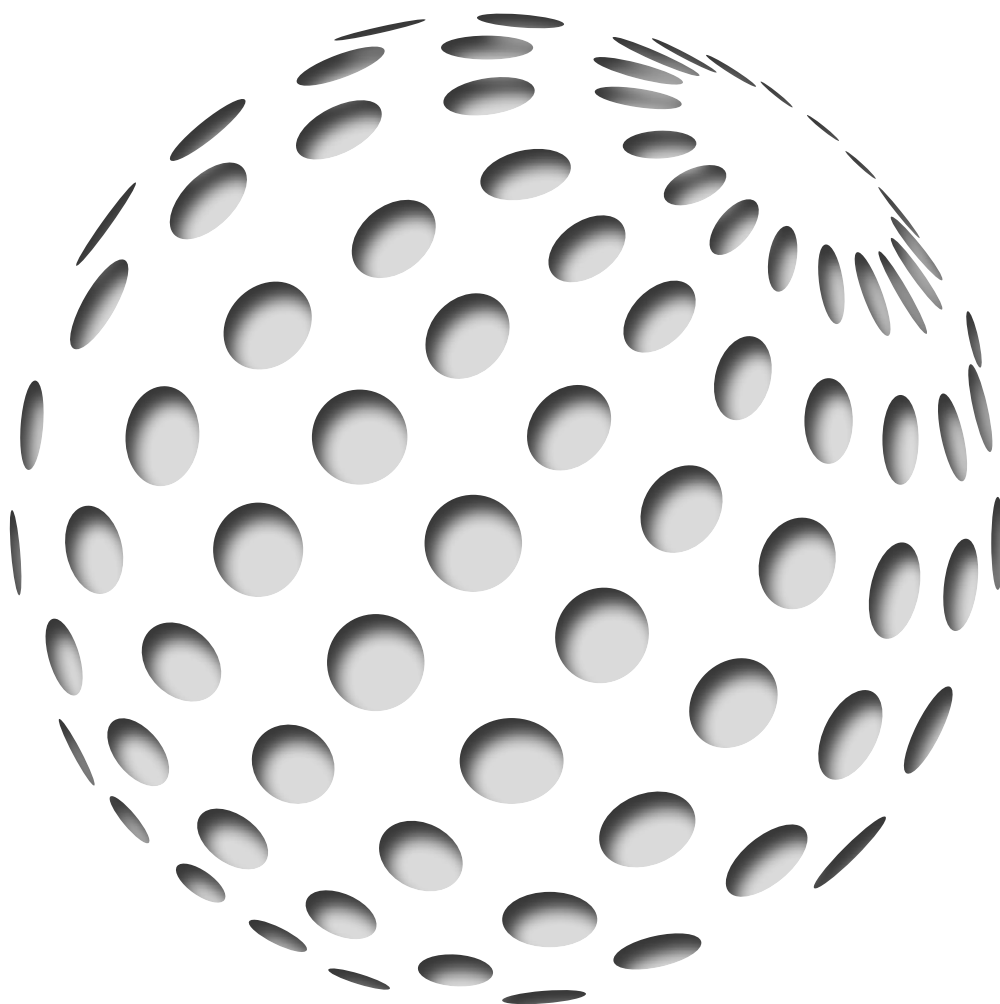


ItalMesh[®] 

DRESSING **INNOVATIVE** PROJECTS



ItalMesh®

THE POWER
OF COATING

ITALMESH, A SPECIALIZED AND TECHNOLOGICALLY ADVANCED COMPANY

ItalMesh is an Italian company specialized in the implementation of architectural projects with the use of expanded metal meshes and perforated panels, serving both national and international markets. The products made by ItalMesh can be used for exterior applications, such as cladding for facades, sunshades, balustrades and fences, as well as for interiors such as false ceilings and interior design. The high technology and quality of materials and workmanship, combined with the infinite combinations of shapes and colors available, allow for a fine combo of aesthetics and functionality, making ItalMesh creations versatile and always innovative.

It offers to the market more than 300 models of expanded metal meshes and perforated custom panels, realized in different materials and with different thicknesses. The innovative fixing systems designed and patented by the ItalMesh team allow easy and quick assembly. The powder-coated or anodized finish allow the material to self-clean and keep its physical and aesthetic characteristics over time.

A GREEN-HEARTED COMPANY

ItalMesh has always supported the use of environmentally sustainable technologies with low environmental impact. The company has a green heart, not only for all the ecological initiatives - such as waste recycling and raw material recovery - carried out within the production processes (90% powered by photovoltaic energy), but also for the products developed from a green perspective.

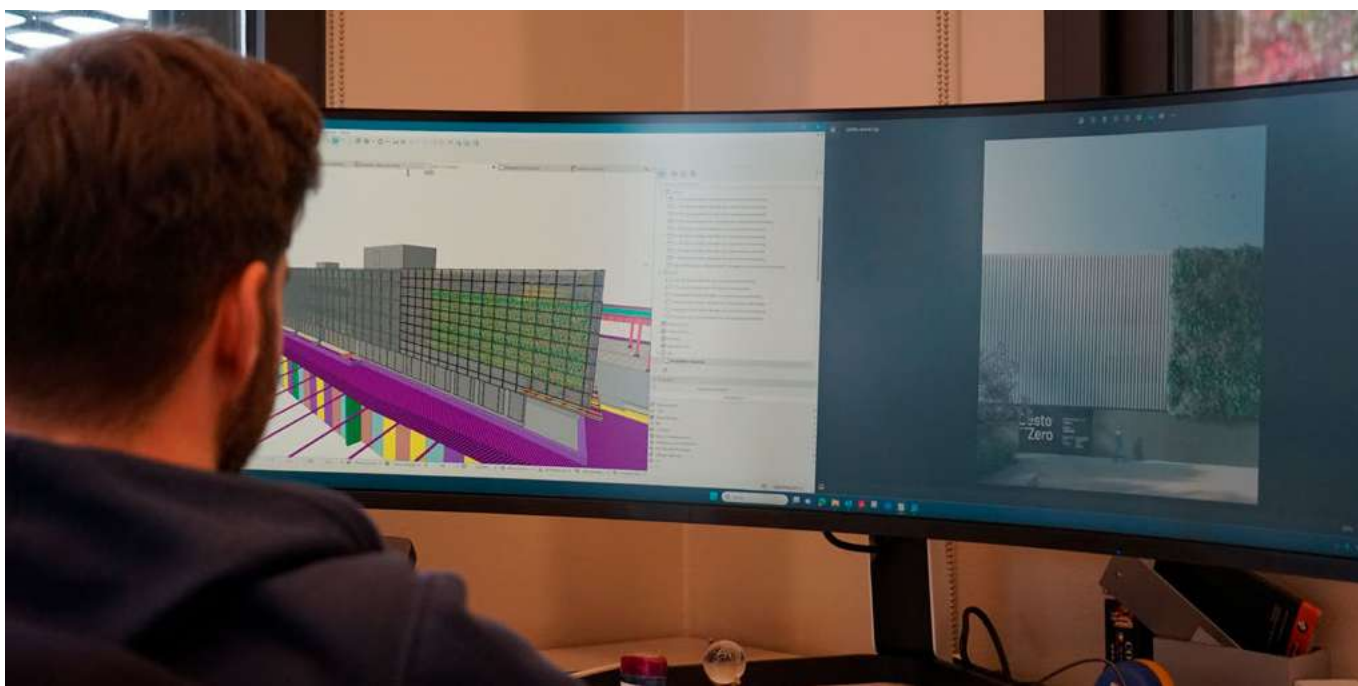
In fact, the use of vertical plant technologies in construction represents a sustainable solution to improve the urban and industrial environment: this architectural conception of the world has therefore prompted the company to create meshes in which plants can live and grow, creating green walls capable of growing a true vertical garden.

BECOMING A 4.0 COMPANY

ItalMesh has dedicated 2020 to automation, process monitoring, human-machine interaction, and above all, traceability. Each ItalMesh product is marked with a code, which not only identifies it, but also allows it to be traced back to each stage of the production process, from the purchase of the raw material, to the processing performed, the finish's control, the packaging by tracing the exact positioning inside the boxes in order to facilitate installation.



ITALMESH, DESIGN AND ENGINEERING



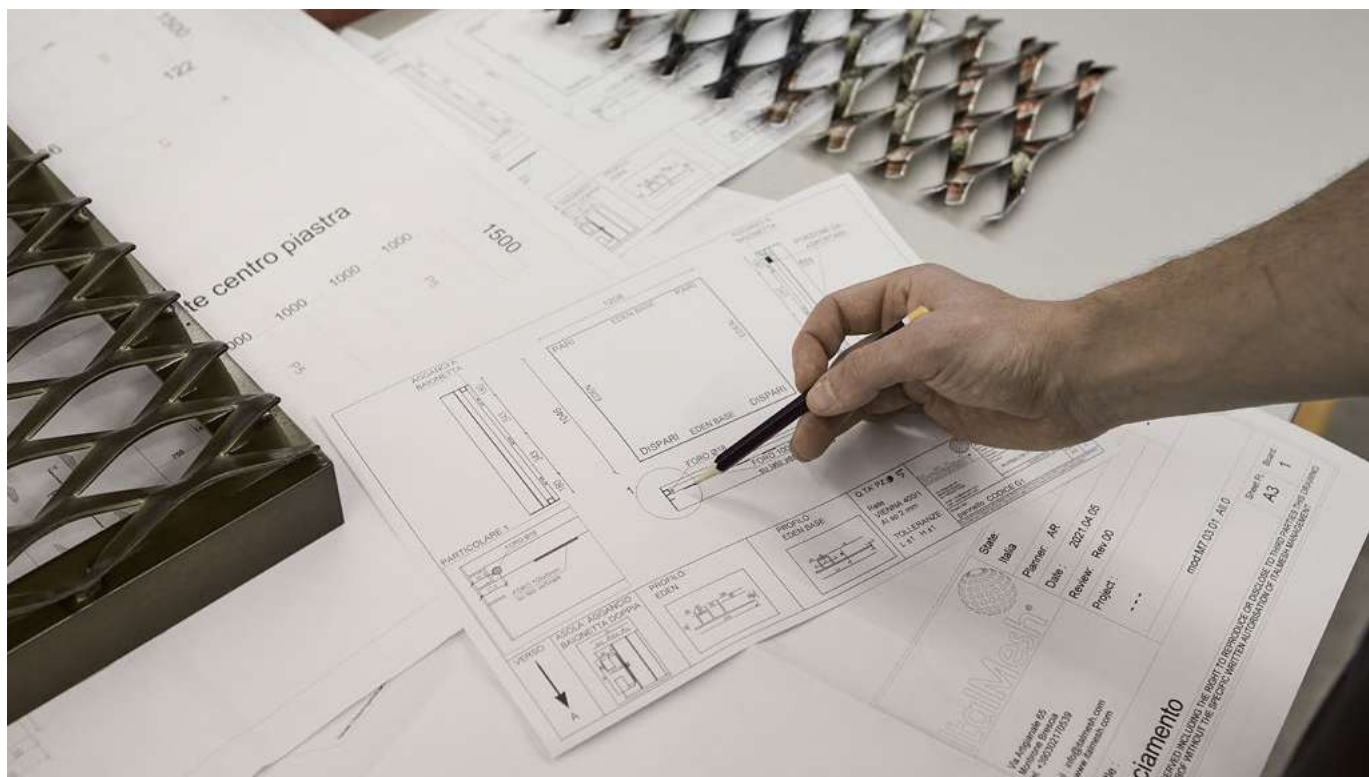
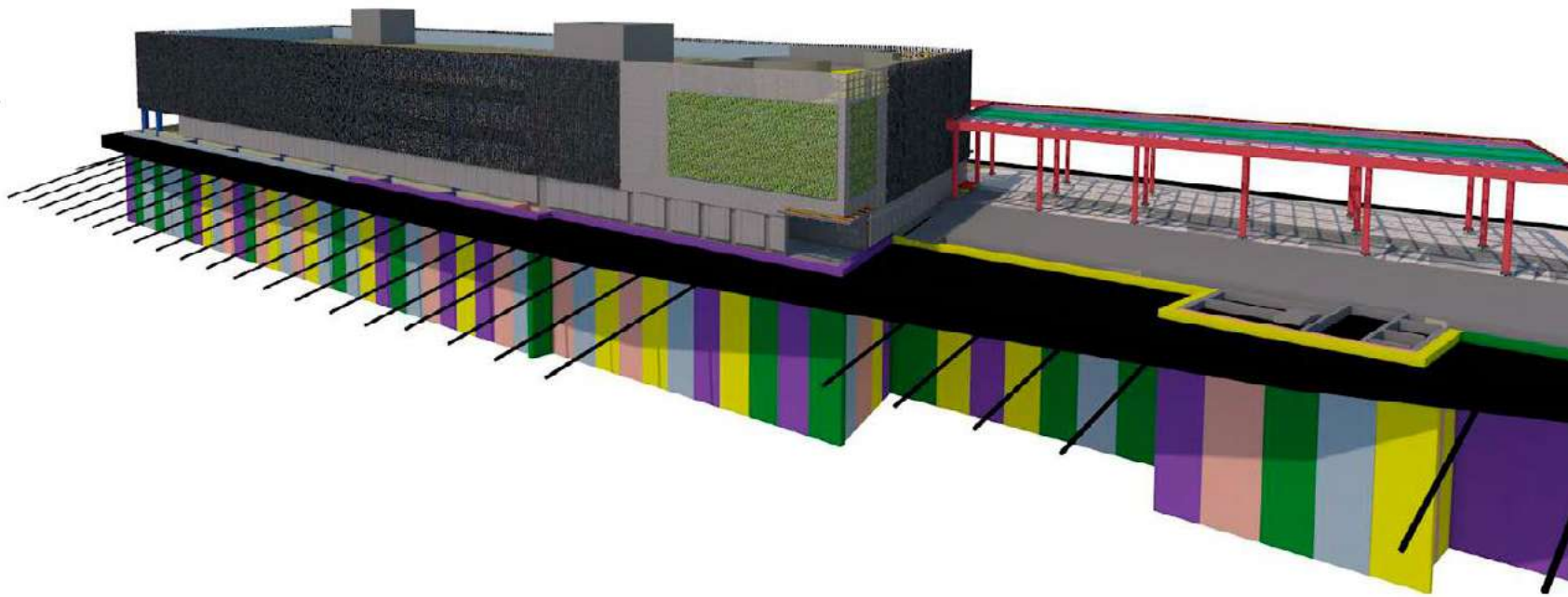
ItalMesh team, composed of architects and engineers with a solid background and a forward-looking outlook, follows and supports clients in the realization of their project through all phases—from concept to design, engineering, product realization, and installation, to bring the architectural project to life through the study of the best engineering and structural solutions, with the aim of perfectly combining aesthetics, design, practicality, and innovation.

CONCEPT DESIGN: Product planning; identification of customer needs; identification of product specifications; concept generation, selection, and testing; product architecture.

ENGINEERING: CAD, executive technical drawings, assembly specifications, bill of materials, design for manufacturing, technical product communication using illustrations, animations, and interactive 3D material.

MODELLAZIONE NUMERICA: fluid-dynamic simulations (single-phase or multiphase); thermal simulations; structural simulations with traditional or innovative materials; dynamic simulations such as impact and crash; multiphysics simulations; multiphase system simulations.

PROTOTYPING: Technology services of rapid prototyping, pre-series production, rapid-manufacturing.

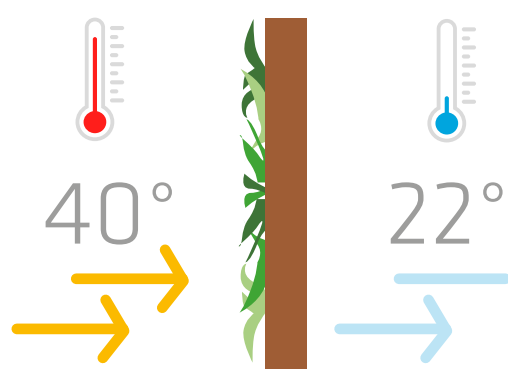


ItalMesh has always invested in research and specific technological knowledge to be constantly in line with market trends and customer needs in order to offer cutting-edge and tailor-made solutions and meet any request; in fact, it has created a team in-house dedicated to R&D activities.

ZERO GRAVITY EDEN: PATENTED VERTICAL GARDENS 100% MADE IN ITALY



From the need to research architectural sustainability, Italmesh developed and patented the Zero Gravity Eden project: expanded metal mesh is transformed into a true vertical garden composed of green walls, designed to easily cover the facades of existing and new buildings. This solution makes urban environments greener and also improves people's quality of life: in fact, vertical vegetation helps to decrease the amount of energy needed to cool buildings, optimizing their energy performance, improving their aesthetics, and helping to reduce CO₂ emissions. The panel is 100% Made in Italy, because it is produced and assembled in Italy with raw material certification.



ZERO GRAVITY EDEN

The company has launched a scientific research and consulting activity in collaboration with Politecnico di Milano, and the patented technology is the subject of international scientific studies and publications. Zero Gravity Eden is officially recognized as a Nature based Solution (NbS type “3”) by European Commission’s biodiversity enhancement guidelines.



CHOOSE ZERO GRAVITY EDEN::

- > Automated, monitored irrigation and excess water recovery.
- > Patented quick and modular anchoring system that is easy to install
- > Vertical garden durability over time and minimal annual maintenance
- > Structure made entirely of 100% recycled Made in Italy aluminum (A2S1D0 certified)

THE BENEFITS OF ZERO GRAVITY EDEN:

- > 1 kg CO₂ /m² year: reduction per m² of vertical garden installed
- > 31 to 59% energy saved in summer
- > 8 to 10°C temperature difference between standard facade and vertical garden
- > 5 to 8 dB sound absorption effect to ensure acoustic comfort

THE MAGIC OF LIGHT COMBINES WITH THE TECHNOLOGY OF COATING





THE SOLUTION TO ANY ARCHITECTURAL PROJECT

The goal of ItalMesh team is to bring the architectural project to life through the study of the best engineering and structural solutions, so that aesthetics, design, practicality and innovation can be perfectly combined. ItalMesh team follows the client in the realization of his project through all phases, from concept to design, from engineering to product realization and installation.

Continuous research into new materials, application systems and finishes give the products versatility. ItalMesh materials are not only used for new constructions, but also for the modernization and upgrading of pre-existing buildings for which innovative solutions are proposed. ItalMesh products are customizable and satisfy the creativity of customers who are supported in transforming their ideas into reality.

All materials are entirely Made in Italy, 100% recyclable and certified according to current regulations and national and international standards.







DESIGN, PRODUCTION AND INSTALLATION

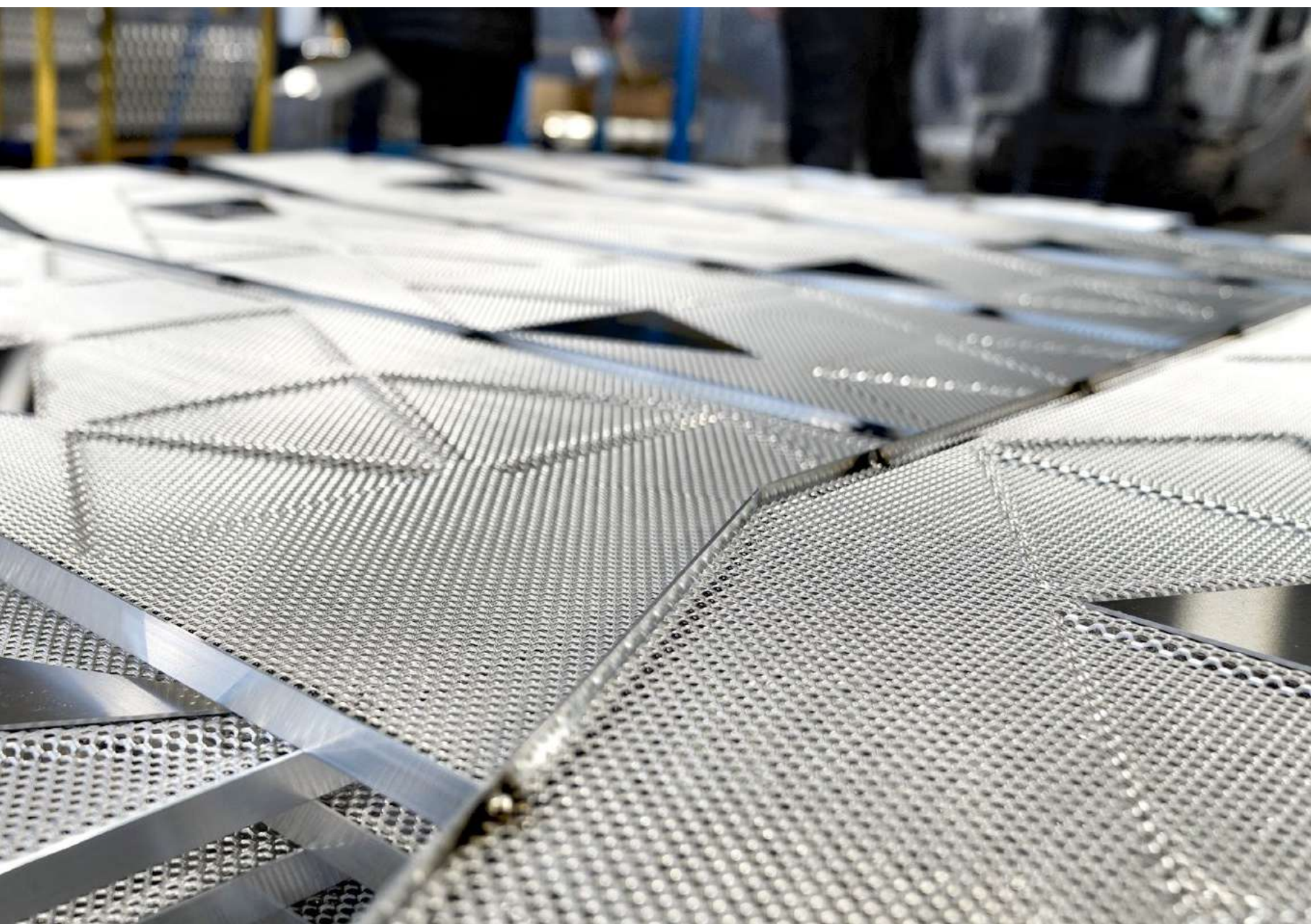
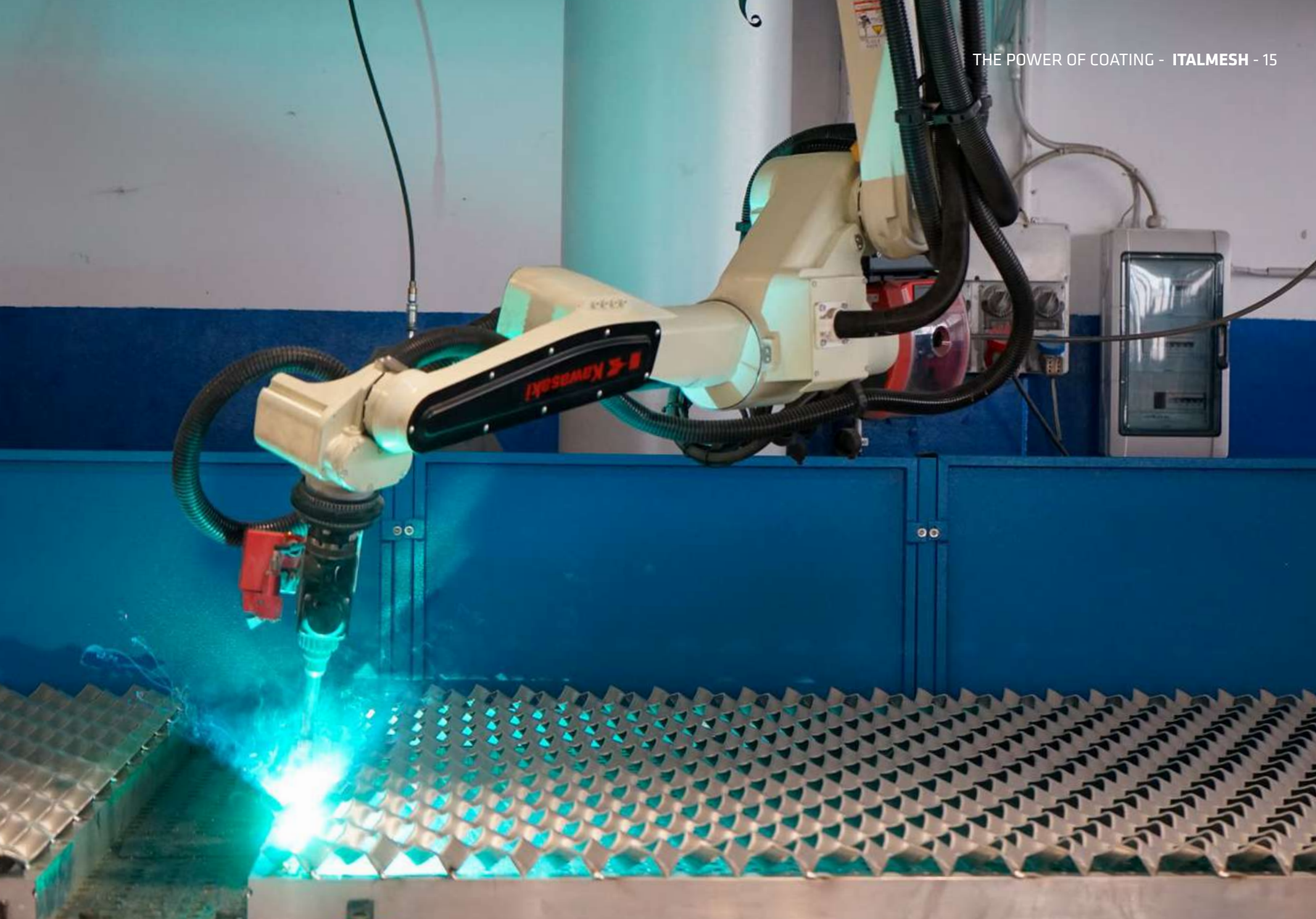
ItalMesh provides:

- Concept design
- Identification of customer needs
- Study of architectural and aesthetic solutions
- Project development
- Engineering and realization of executive technical drawings
- Animation and creation of interactive 3Ds
- Fluid dynamic simulation
- Thermal simulations
- Structural simulations
- Prototyping and mock-ups
- Installation and supervision on site

PRODUCTION

ItalMesh has in-house professionals who specialize in Building Information Modeling (BIM), a methodology that helps plan and optimize production as well as the implementation and management of project construction. All project data is collected, combined and digitally linked within a database to transfer machine settings to production. The virtual construction is also viewable as a three-dimensional geometric model, with guaranteed traceability of each element.







PRODUCTION PROCESS

ItalMesh production covers over 20.000 square meters and is made up of latest generation machinery interconnected that communicates with the programming and planning offices.

The production areas are divided into sheet metal processing sectors with cutting and bending areas, profile processing areas with machining centers and marking machines. The robotic welding area guarantees fast times and production consistency for both large and small batches.

ItalMesh has also dedicated an area of the plant to the creation of surface finishes, with two latest generation of robotic powder coating lines.



INSTALLATION

The patented application methods are specially designed by ItalMesh so that installation is quick and easy. Panels installed with ItalMesh systems are removable. ItalMesh has achieved RT-05 certification (Accredia's Technical Regulation 05), which contains provisions for the evaluation and certification of construction and installation companies operating in the construction industry. This regulation provides guidelines for the management of access and site management documentation, which, in addition to safety aspects, includes a series of documents designed to provide complete traceability of the product, and being able to identify each individual panel is essential for the complexity of projects.

The finishes are designed not only to provide special aesthetic effects that personalize and make each project unique, but above all as a protective coating that allows high resistance to the most extreme weather conditions.

The finishes are designed not only to offer special aesthetic effect that embellish each project, but also as a protective coating that allows high resistance to the most extreme climatic conditions.



POWDER COATING

The company is able to quickly provide various customized color solutions and guarantee durability and uniqueness at the same time. The powder coats used are composed of thermosetting resins with addition of pigments giving the color. The powder coating cycle consists of 7 stages of pre-treatment in washing tunnels, powder coating in automated booths equipped with anthropomorphic robots.

All parameters are constantly recorded and monitored. Powders used are completely non-toxic, with high resistance to UV rays and corrosion.



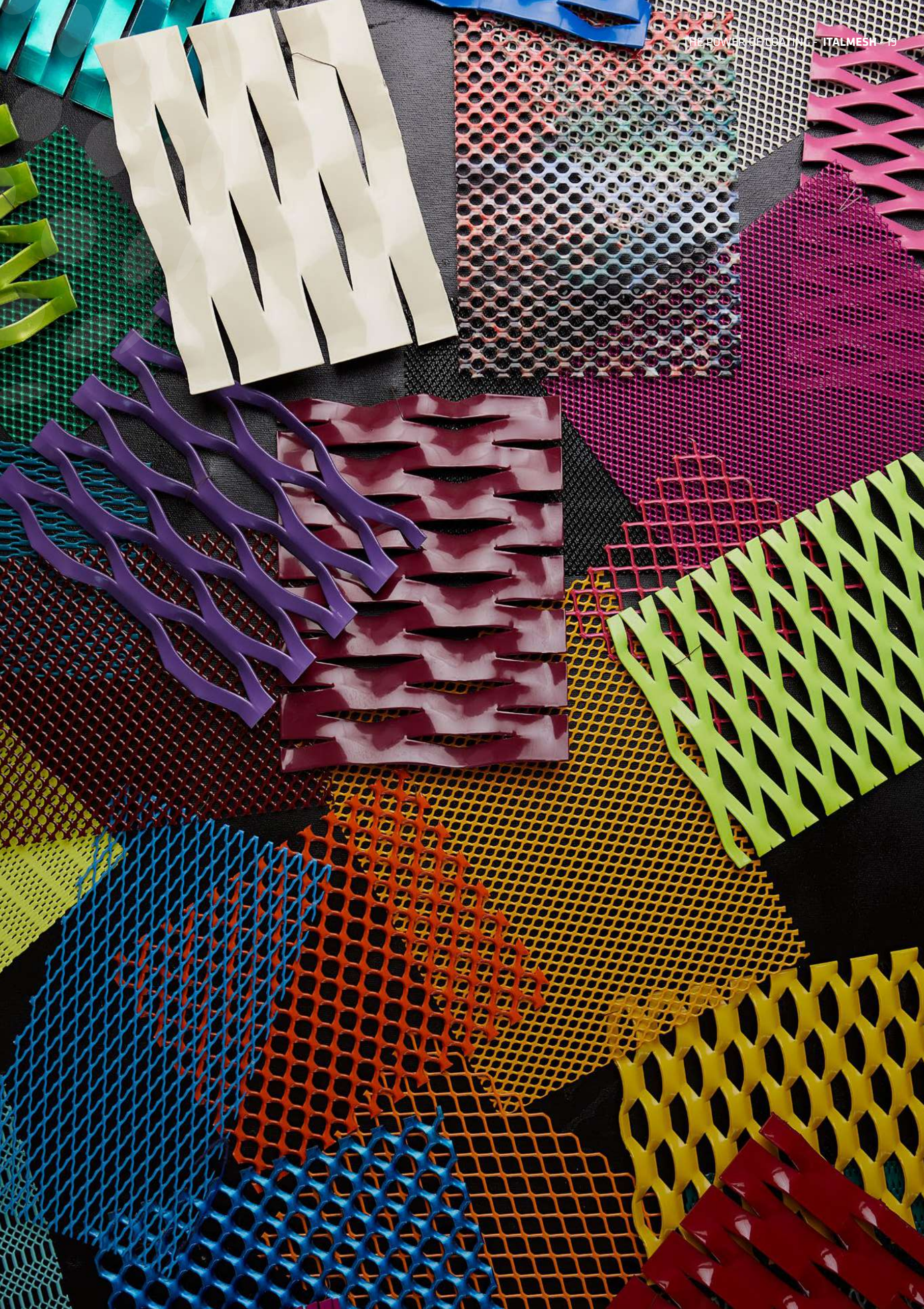
ANODIZING

The electrolysis process is carried out in special tanks where direct current passes through and the coloring takes place.

A protective oxide layer forms on the surface of the treated metal and protects it from corrosion. The electrochemical treatment of metal surface improves corrosion and wear resistance.

02

LASTING TREATMENTS AND FINISHES



ItalMesh has created within its company a staff dedicated to research and development in order to be able to respond to a wide variety of market demands. Every solution proposed by ItalMesh is always different and original, with a focus on practicality and functionality.

The finishes guarantee durability over time and contribute to eco-sustainability, an essential choice for an attentive and responsible society. The design of the claddings takes into account the specific requirements related to the intended use and the construction constraints dictated by the executive drawings.

Thanks to the characteristics of expanded metal meshes, technology and specialized workmanship, ItalMesh provides the maximum guarantee in both small and large projects.



WE DEVELOP YOUR IDEAS, MAKING THEM UNIQUE

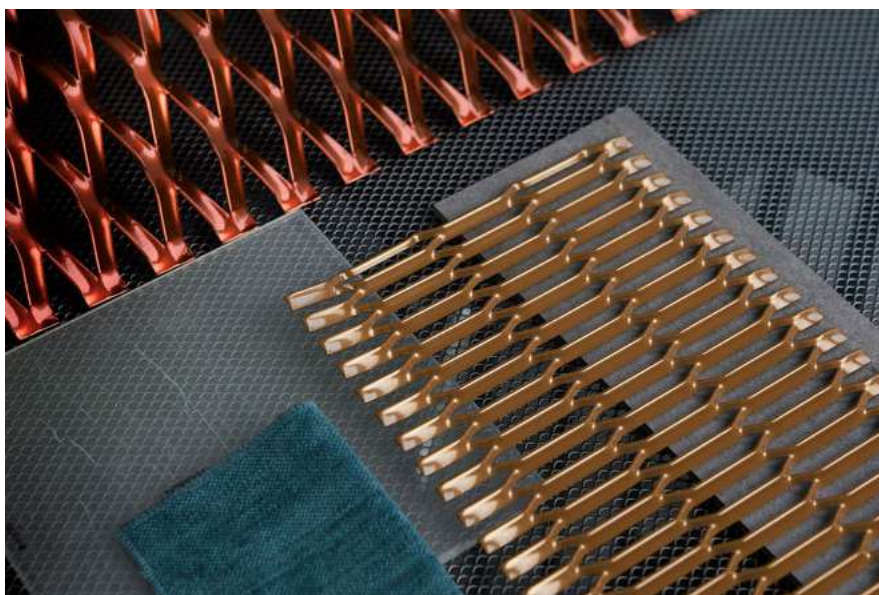


100%
Made in Italy



100%
Riciclabile

ItalMesh's strength is custom fabrication. For the architectural sector from the production departments, fully customized products are made, in size, shape, finish and mounting systems.





04 WE MAKE THE **SPACE** AROUND YOU **THREE-DIMENSIONAL**

EXPANDED MESH

More than 300 models of expanded metal mesh that ItalMesh offers to the market can be made of iron, aluminum, stainless steel, weathering steel, copper and brass, with thicknesses ranging from 0.5 mm up to 5 mm. The expanded metal meshes, with the alternation of curved and flat surfaces, the effect of full and empty spaces, with plays of light and shadows create unmistakable aesthetic effects.

THREE-DIMENSIONAL EFFECTS

Modern manufacturing processes make possible to create threedimensional shapes using expanded mesh to respond to individual customer wishes. Inspired by geometries and natural elements, the expanded metal meshes create unique optical effects, that change with the variation of light and the point of observation.

PERFORATED PANELS

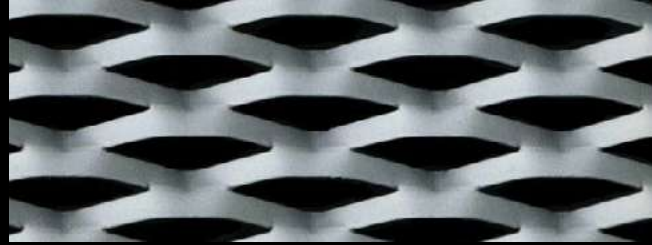
The capacity and production innovation have allowed ItalMesh to create panels with customized designs through the different types of drilling and laser cutting, which find application in architectural field.



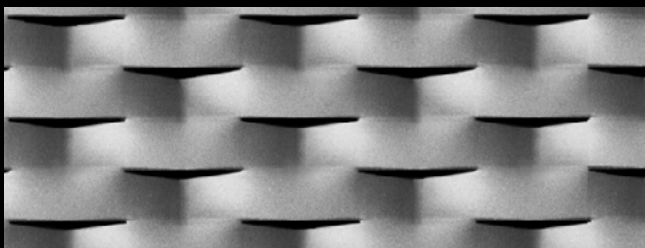
EXPANDED MESH



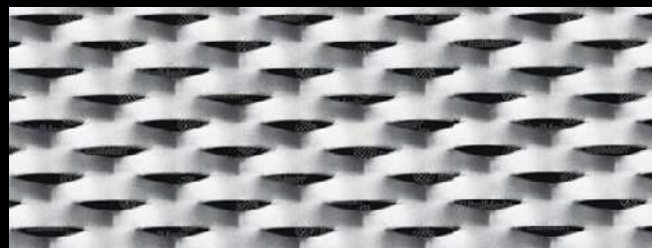
AQUILA



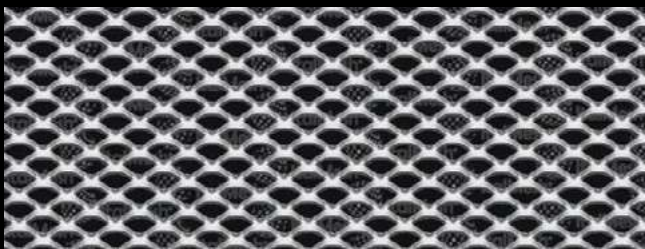
BRESCIA



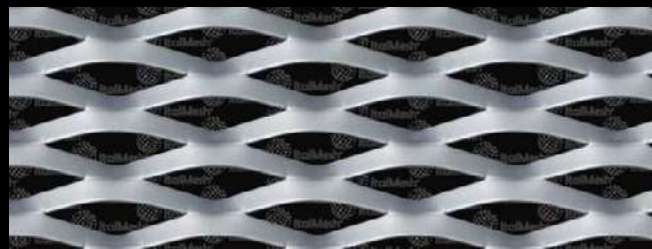
COMO



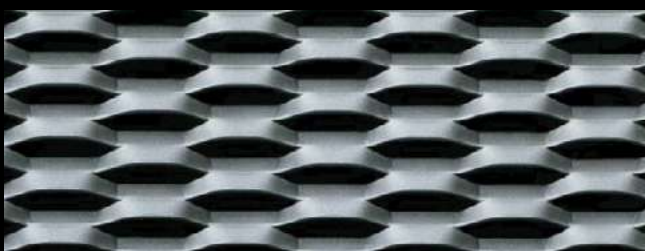
MILANO



RIMINI



ROMA



SIENA



TORINO

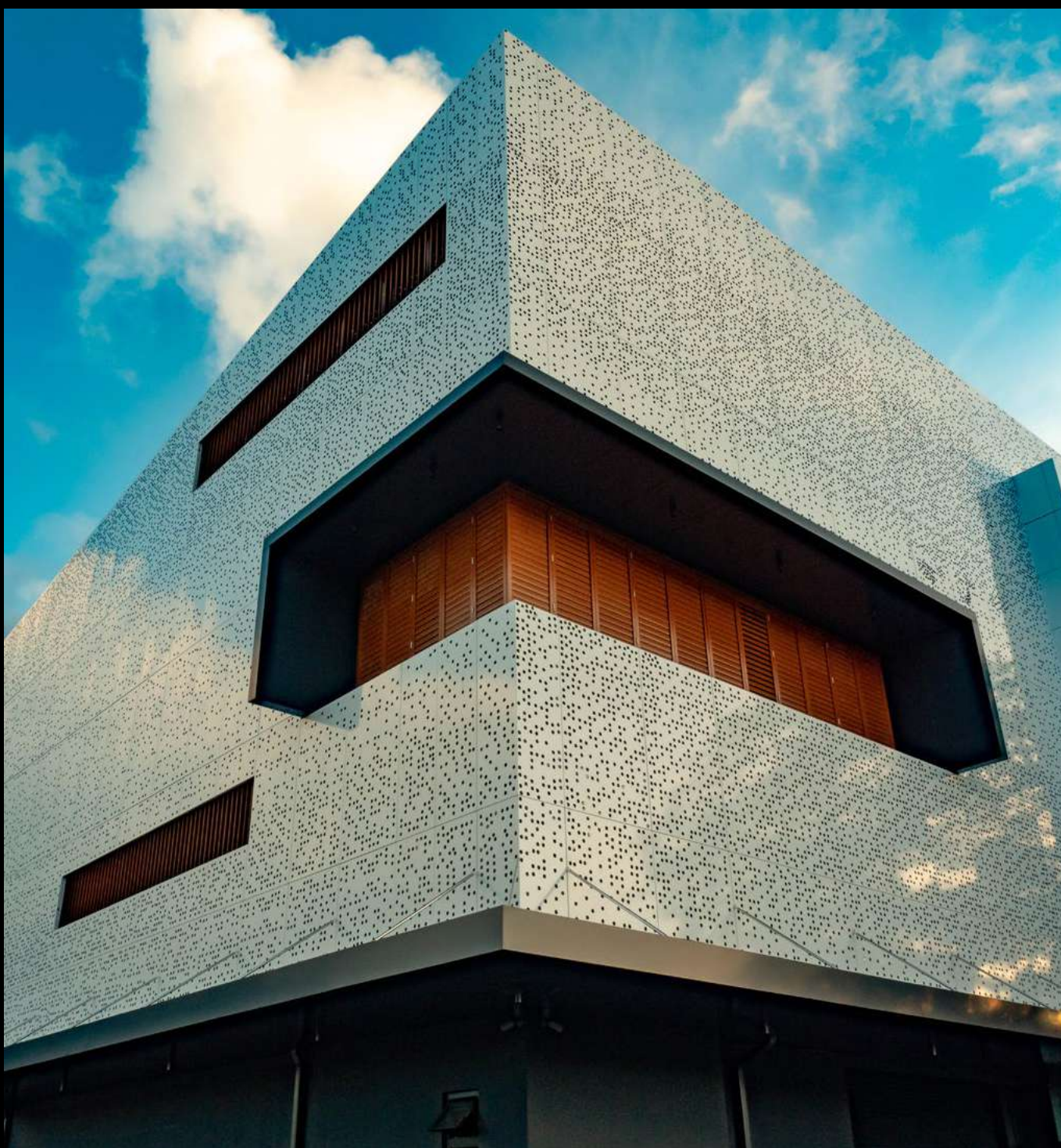
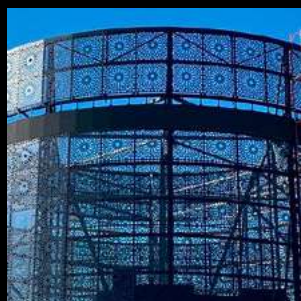


VENEZIA

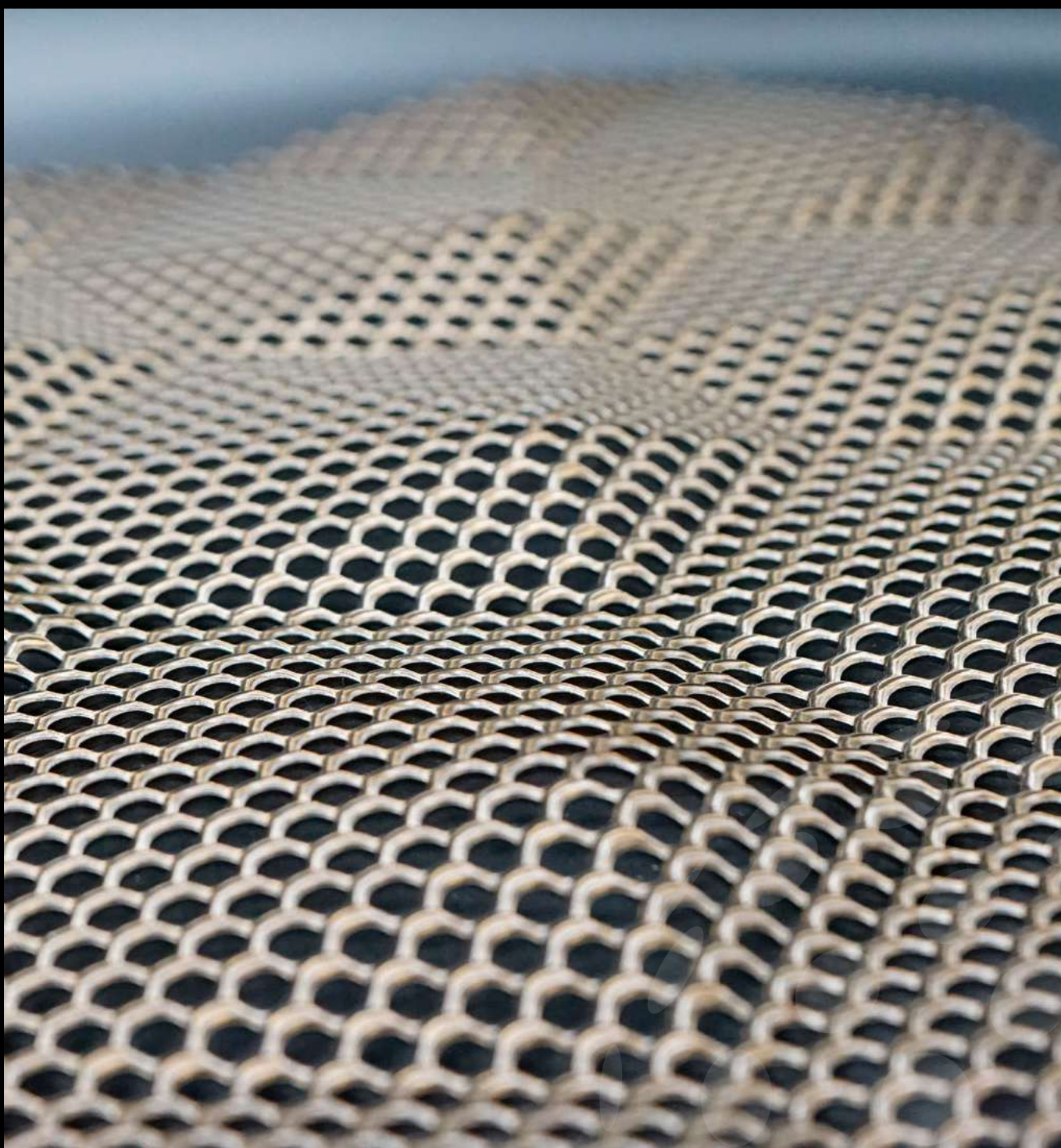
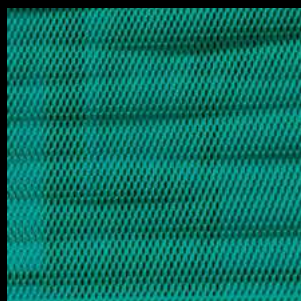


VICENZA

PERFORATED PANELS



THREE-DIMENSIONAL EFFECTS



Quality in ItalMesh is experienced by the entire company as an organizational tool to improve customer satisfaction and as a stimulus to better operational efficiency. The correct and consistent definition of processes coordinates the collaboration between all departments, both production and support. Since 2010, ISO 9001 certification has been achieved, in addition to ESMA certification, specific for Middle Eastern markets. In 2021 ItalMesh achieved ISO 17065 certification (ASTM D1929- 20 AND UNI EN 1350- 1:2019) for reaction to fire. Close cooperation with certificated partners working in quality control is a key aspect that ensures high quality standards.



05 100% **MADE IN ITALY** MATERIALS AND OUR **CERTIFICATIONS**





06

WHY CHOOSE ITALMESH: THE POWER OF COATING

RESEARCH

3D MESH

ECO GREEN

MODULARITY

ItalMesh 

EFFECT

QUALITY

EASE

CREATIVITY

MODULARITY

From the simplest to the most complex solutions for any architectural project.

QUALITY

ItalMesh products are perfectly coplanar and guaranteed over time.

CREATIVITY

ItalMesh can customize every variation of shape, size and color.

EASE

ItalMesh's technological solutions allow for great ease and speed of installation.

EFFECTS

ItalMesh creates extraordinary effects by crossing the creativity of the client, with always innovative products.

ECO GREEN

ItalMesh has a green heart and uses environmentally sustainable technologies with low environmental impact in its production processes.

RESEARCH

The company has always invested in research and technology for cutting-edge and customized solutions.

3D MESH

ItalMesh uses stretched mesh to create unique three-dimensional shapes and optical effects.

07 OUR REFERENCES

ETIHAD ARENA

It is the largest and most modern indoor multipurpose facility in the Middle East, with a capacity of 18,000 spectators and hosts a wide range of events. The Etihad Arena is not only a modern architectural structure, but also a 100% sustainable building; in fact, it won the Sustainable Building Design of the Year award at the 2018 MENA Green Buildings Awards. An iconic design inspired by the woven meshes of basket used by Bedouin tribes and a modern structure that nevertheless means to have a close link with the history of the country. It is located on the lively waterfront of Yas Bay on Yas Island in Abu Dhabi. For a total of 216 square meters, about 300 gold-colored Brescia 75 model expanded metal sheet panels will be used; coloring given thanks to the special anodizing process.

LOCATION
Abu Dhabi - UAE

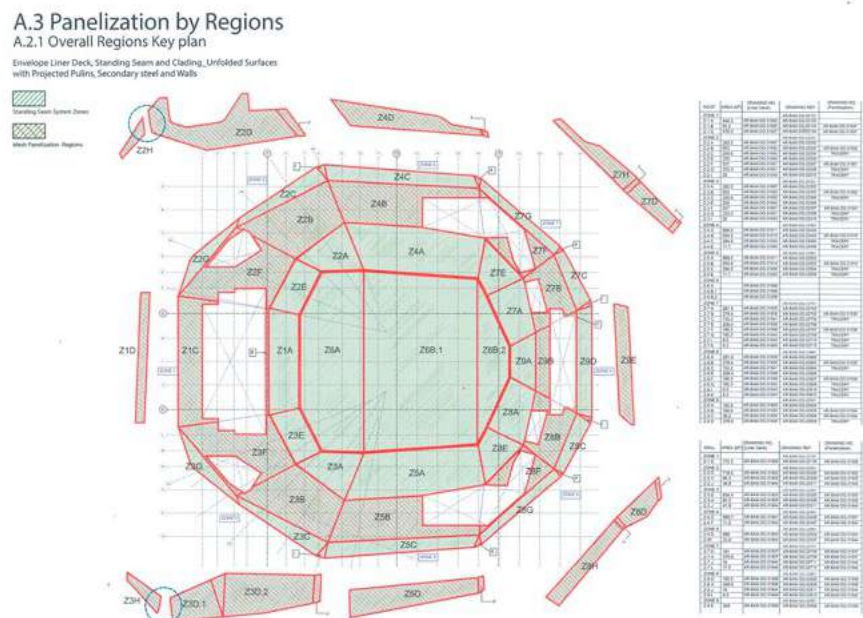
TOTAL SMQ
25.000

TYPE OF MESH
Brescia 200R / Roma 65
Rimini 15 / Siena 45



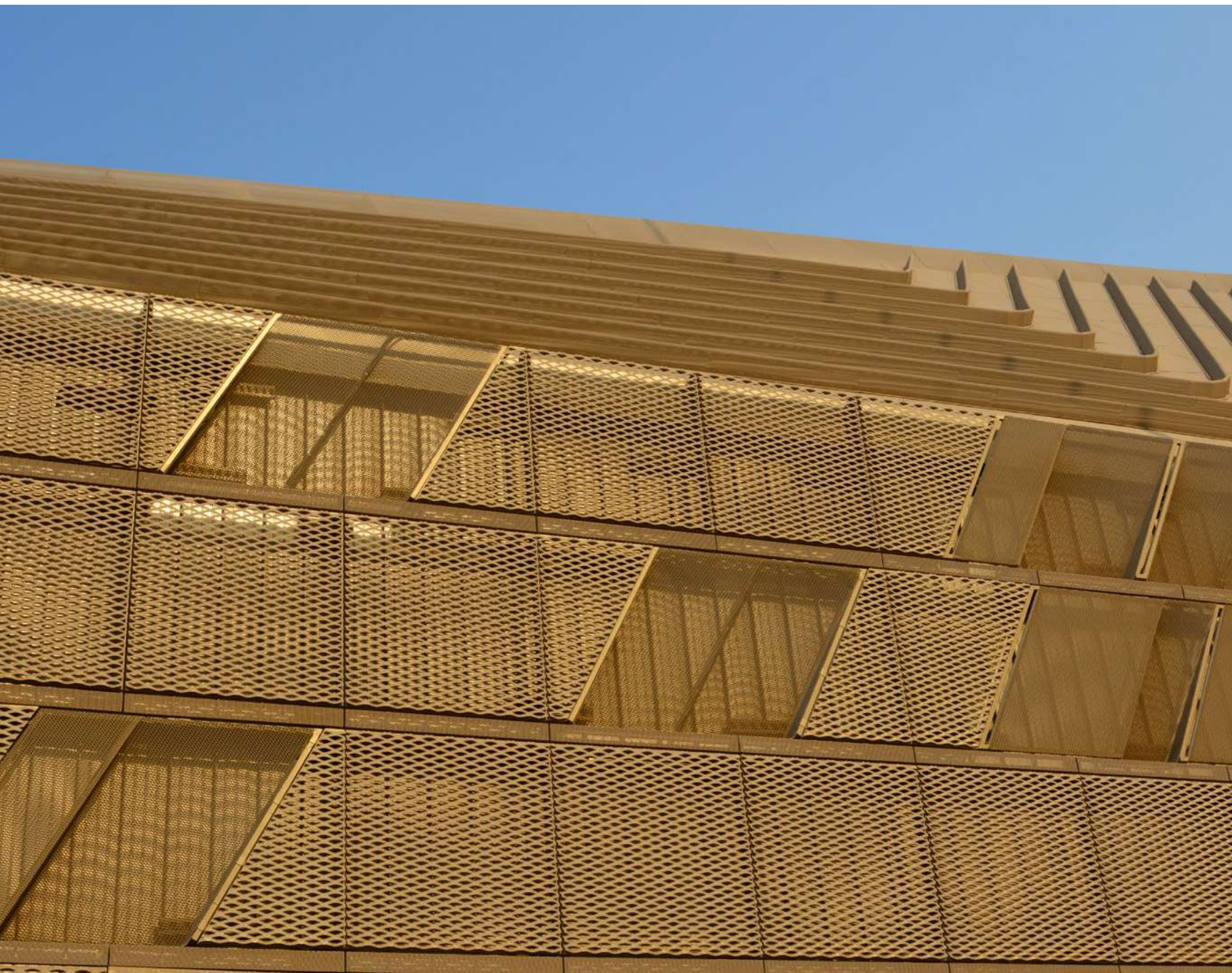
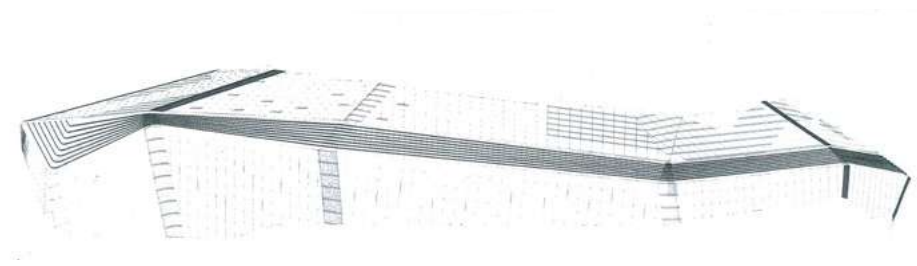


Precisely for this reason, high quality raw materials and finish were chosen. The building will be completed in 2021. ItalMesh participated in the design, engineering and construction of all the modules used for the cladding of the external facade of the arena. Technicians did more than a year of research to find the perfect solution for the installation of over than 28,000 expanded metal mesh panels, 2,000 of which are standard and the rest is completely custom and different.





ItalMesh team followed every stage of the production process, organizing the installation sequence, checking with engineers and architects in charge of the work, aesthetic, functional and warranty aspects. Precisely for this reason, high quality raw materials and guaranteed finishes were chosen.



SPORT ARENAS

ItalMesh has been hired for the construction of two new hockey arenas interiors, built for the 2022 Brock University Summer Games in Canada. Fourteen hundred square meters of ItalMesh model Brescia 200 aluminum stretched mesh with a natural finish, obtained through anodizing processes, has been used to clad the interior areas of the arenas, which are each on 2 floors. The mixture created between Italmesh panels, materials, colors and lights make the areas functional and modern.

↑ Algoma Central Arena
Triangle Reception Community
Wellness Hub

↑ Algoma Central Arena
Triangle Reception

LOCATION
Niagara - Canada

TOTALE MQ
1.500

TYPE OF MESH
Brescia 200



ZUCCHETTI VILLAGE

For the requalification of a shopping center based in Lodi, ItalMesh team has been chosen to cover two facades of the Zucchetti Group headquarters building.

For a total of 216 sqm, will be used about 300 panels of expanded metal mesh model Brescia 75 gold colored thanks to the special anodizing process.

LOCATION
Lodi - Italy

TOTAL SMQ
216

TYPE OF MESH
Brescia 75

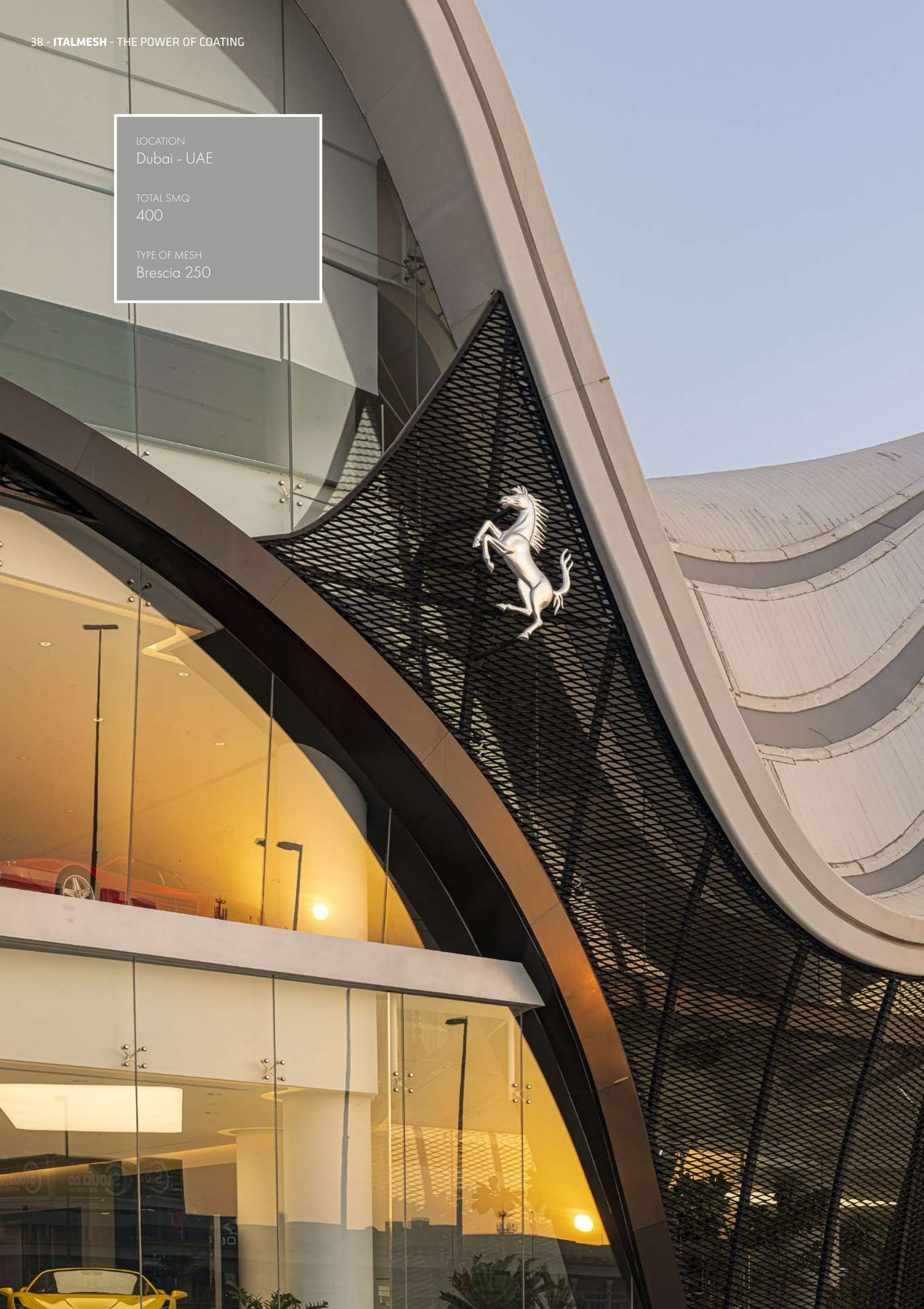




LOCATION
Dubai - UAE

TOTAL SMQ
400

TYPE OF MESH
Brescia 250



FERRARI AND MASERATI SHOWROOM

ItalMesh has contributed to the creation of the Dubai showroom of prestigious Italian car manufacturers. Expanded meshes were used for shielding the entrance of the building to obtain the sinuous effect desired by the customer. ItalMesh team has proceeded to create shaped panels through the water cutting of expanded metal mesh. The model used is Brescia 250 in aluminum, the expanded metal mesh has been powder coated with matt RAL 9005 color.



BURGER KING

Team ItalMesh engineered and produced the external cladding of the new Burger King shop in Rovereto opened in 2023. 1250sqm of perforated aluminium sheet were used and painted with a highly durable white powder product that, depending on how it reflects the sunlight and the position of the observer, gives depth and movement to the complex. In addition, all inserts and profiles in red, create contrast with the glossy white of the walls.





LOCATION
Rovereto - Italy

TOTAL SMQ
1.250

TYPE OF MESH
Perforated and painted
aluminium panels

LOCATION
Dubai - UAE

TOTAL SMQ
6000

TYPE OF MESH
Brescia 400
Siena 150

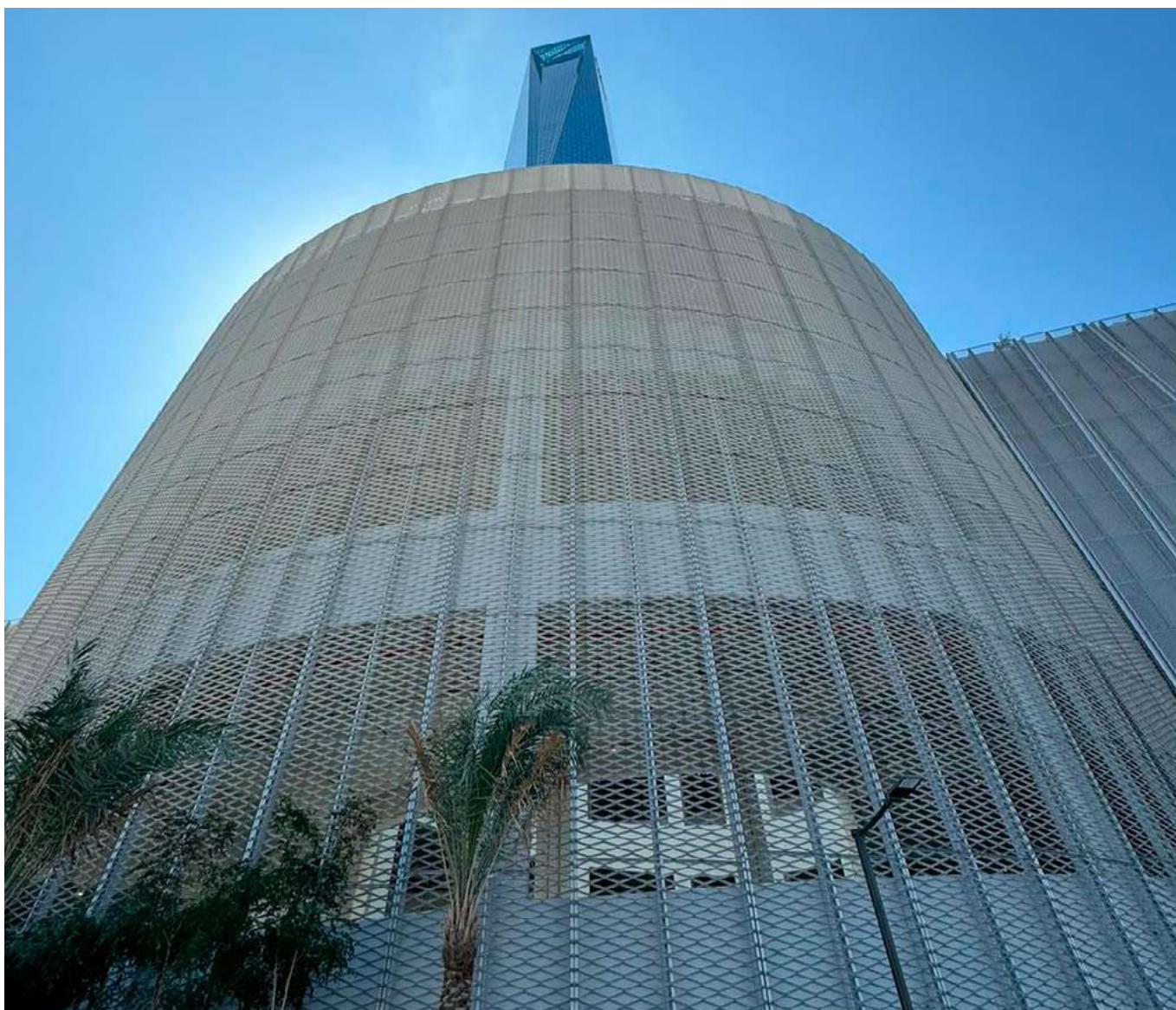


UP TOWN

One of the latest challenges faced by ItalMesh team was the construction of UP TOWN, the new tower in Dubai that represents the best of luxury, located in the international Uptown district.

Thanks to the experience gained over the years, ItalMesh has realized the cladding of the entire lower part of the second tallest tower in Dubai, after Burji Khalifa.

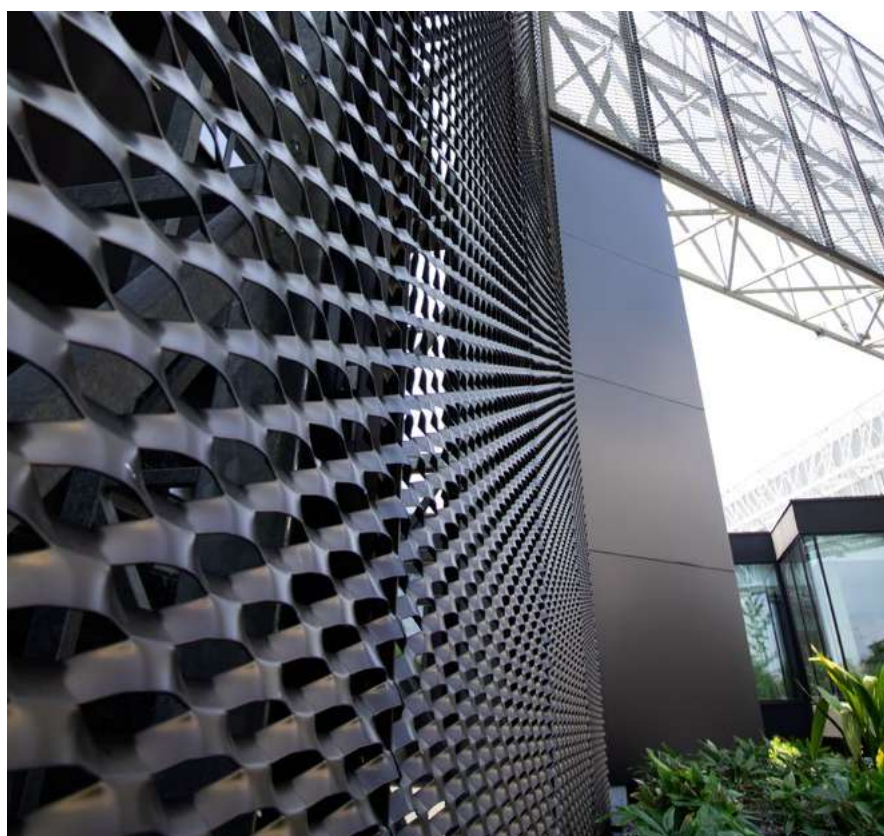
For the realization of this project, more than 6000m² of expanded metal mesh models Brescia 400 and Siena 150, powder-coated in matt silver were produced. The uniqueness of the project is dictated by diversity of panels, most of them with a curvature that gives roundness and dynamism to the project.



CONF INDUSTRIES

The globally benchmark company for the production of handling, storage and furniture systems for a wide variety of needs in different sectors of industry and services turned to ItalMesh for the facade cladding and fencing of the outdoor area.

More than 2,000 square meters of expanded mesh panels model Siena 150 made of powder-coated aluminum with a special bronze color that changes according to the reflection of sunlight were used.



LOCATION
Brescia - Italy

TOTAL SMQ
2.000

TYPE OF MESH
Siena 150





BINGHATTI

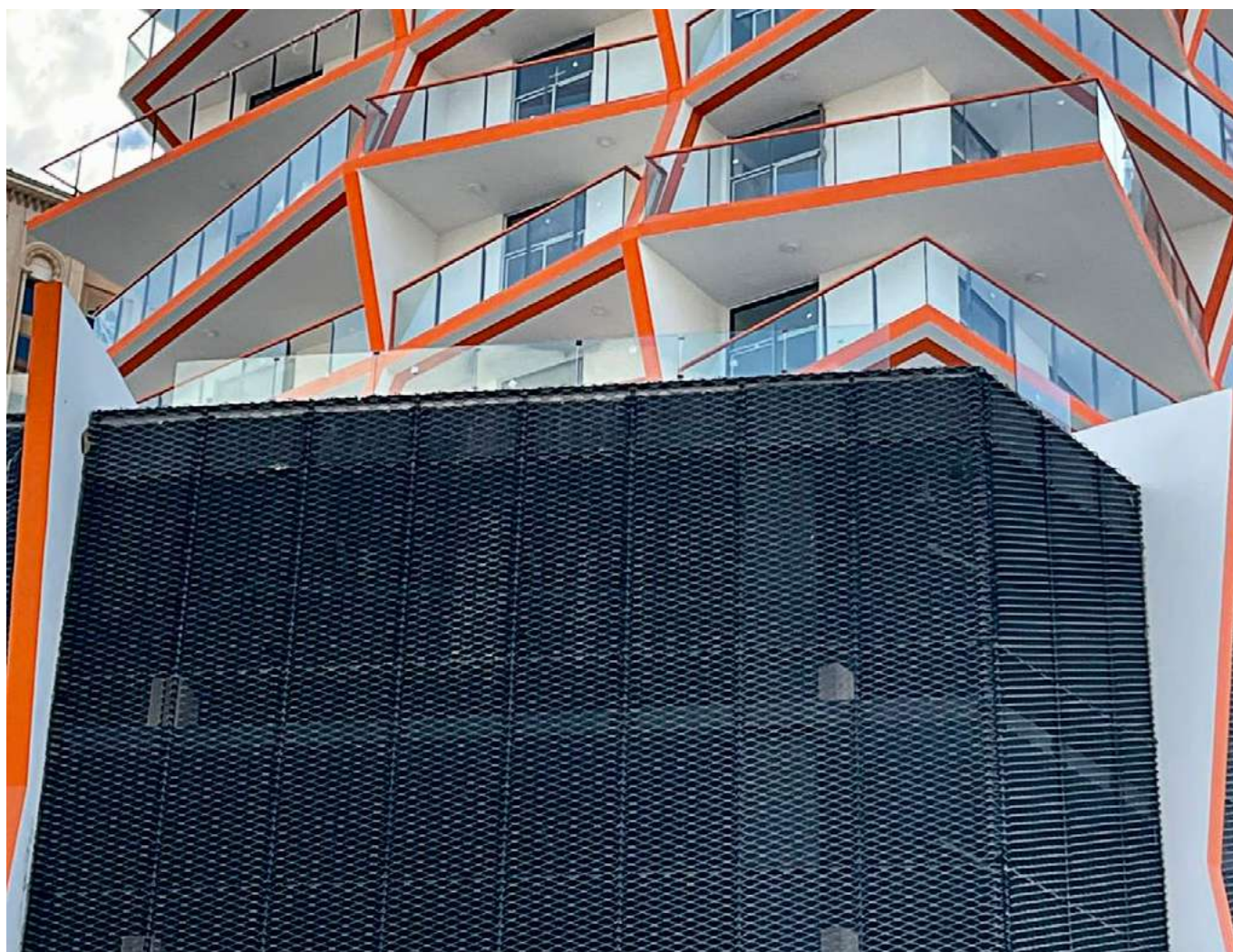
With dynamic growth in recent years, Muhammad Binghatti became pioneer of a new era in Middle East thanks to his real estate architectural and design portfolio with a revolutionary architectural design.

The new residential complex designed by Binghatti has been inspired by traditional pearls fishing; it can be seen from the external facades that remind the structure of pearls shells. The concept of his project has the deep historical roots revisited with contemporary glance. Another peculiarity lays on its geometrical structure which differences it from most skyscrapers of Dubai city. ItalMesh has participated to the construction of this architectural masterpiece by realizing the lower part of the building using 6000smq black powder-coated "Brescia250" panels.

LOCATION
Dubai - UAE

TOTAL SMQ
6.000

TYPE OF MESH
Brescia 250



DOCKLANDS

Requalification of a multi-purpose center in the Seychelles, in the city of Victoria was carried out in collaboration with the AHTIME Architects Studio.

The intervention involves the cladding of the facades with perforated aluminum sheet metal panels. Cladding and holes design was completely conceived and implemented by ItalMesh team.

The project takes on a new elegant dress when the sun goes down, in fact, by exploiting the play of full and empty, the facades of the multipurpose center become real lighting fixtures, giving the building the look of a lantern.

LOCATION
Victoria - Seychelles

TOTAL SMQ
1.200

TYPE OF MESH
Lamiera microforata

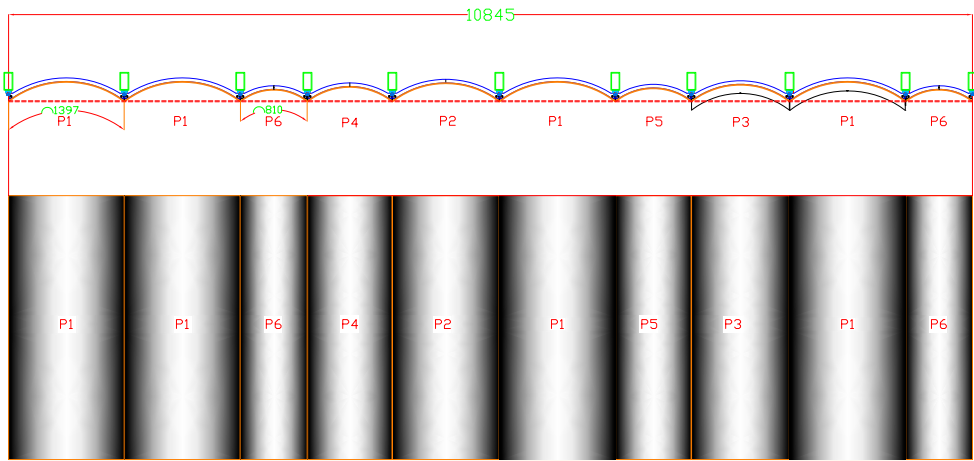
ARCHITECTURAL FIRM
AHTIME Architects



LE VELE SHOPPING CENTER

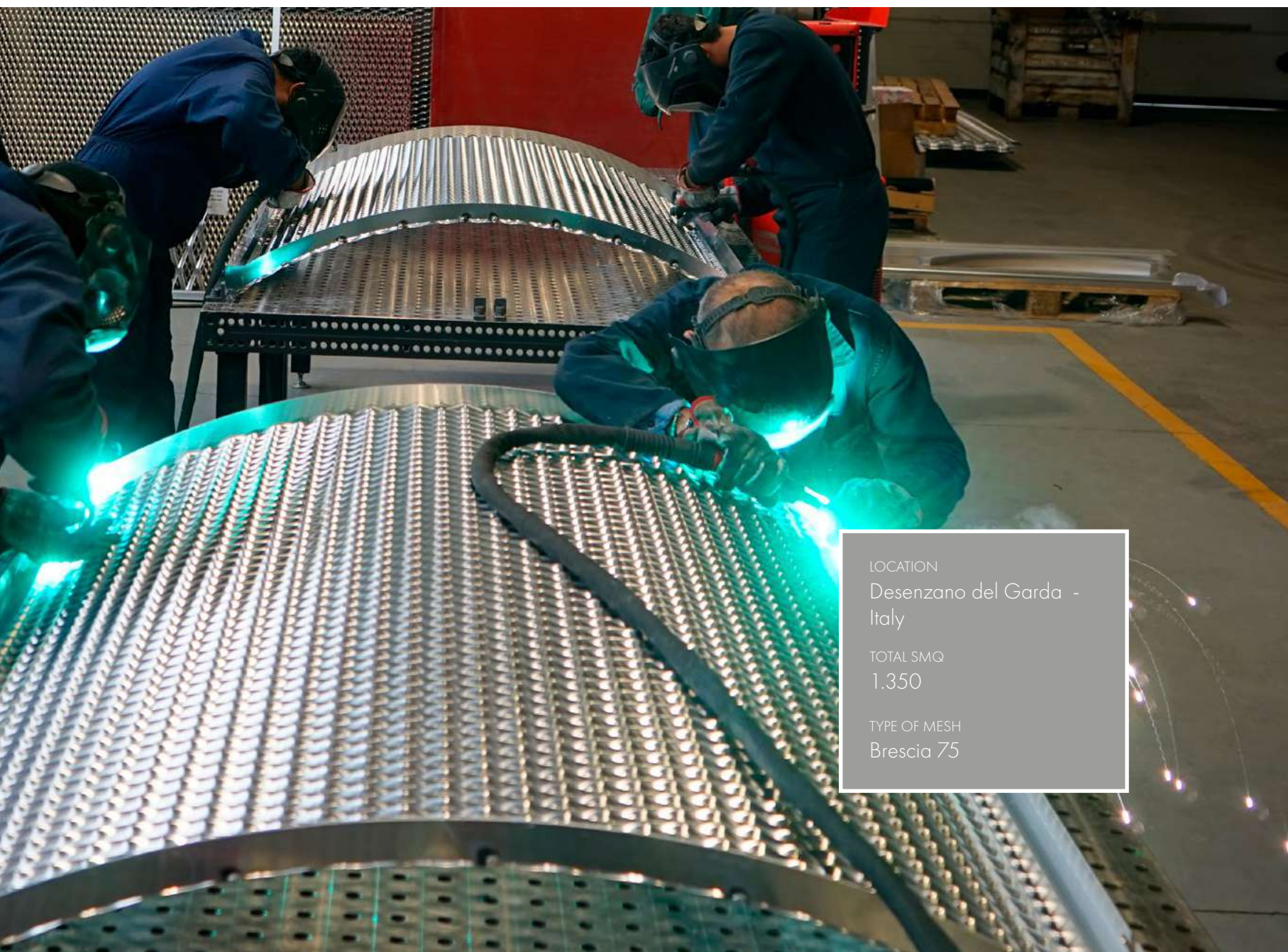
At the beginning of 2022, the project of modernization and expansion of the shopping center “Le Vele” in Desenzano del Garda was launched. An architectural redevelopment that affects both the interiors and exteriors.

An innovative design that doesn’t forget the traditions of the area skill, connected to the lake and the sails of the boats, from which the name of the center derives. ItalMesh contributed to the restyling of the facade. For the cladding, 1350 mq of expanded mesh panels model “Brescia75” in aluminum were chosen and installed, calendared and powder coated in RAL 9003 color.





THE POWER OF FORM - ITALMESH - 51



LOCATION
Desenzano del Garda -
Italy

TOTAL SMQ
1.350

TYPE OF MESH
Brescia 75

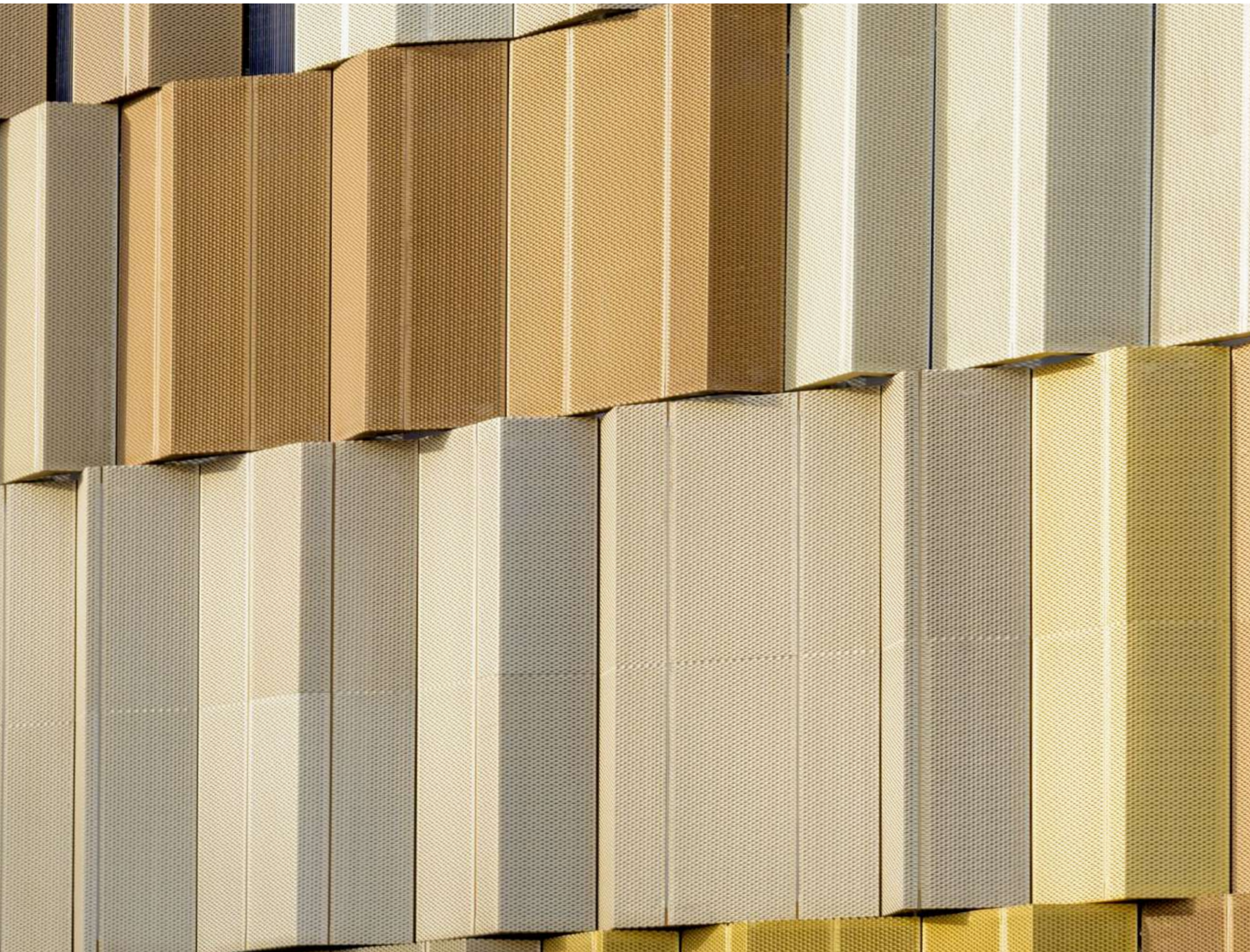


SHOPPING
OFFNET

LA PIADINERIA


lapecoranera
L'ORIGINALITÀ HA UN GUSTO





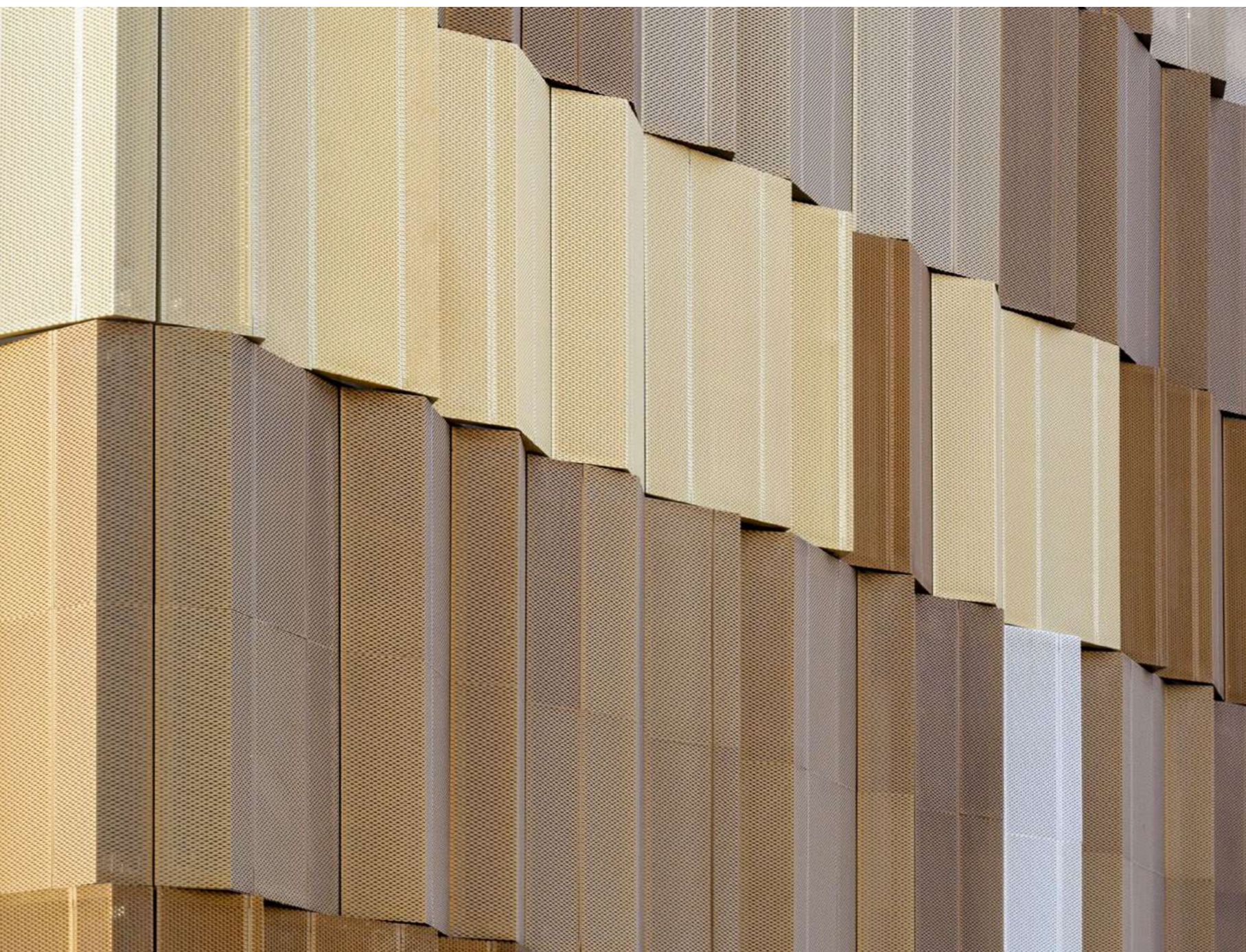
PARKING KAFD

Multi-storey car park of the financial center and subway station in Saudi city Riyadh. ItalMesh has developed the design and production of about 4.000 panels of expanded metal mesh model Brescia 75, which cover the facades of the building. Features of the project are more than 400 models of panels designed by the technical team, the threedimensionality given to panels thanks to the scrupulous design with realization of folds and grooves. A mix of 6 anodized colors give dynamism and elegance to the entire structure.

LOCATION
Riyadh - Arabia Saudita

TOTAL SMQ
11.000

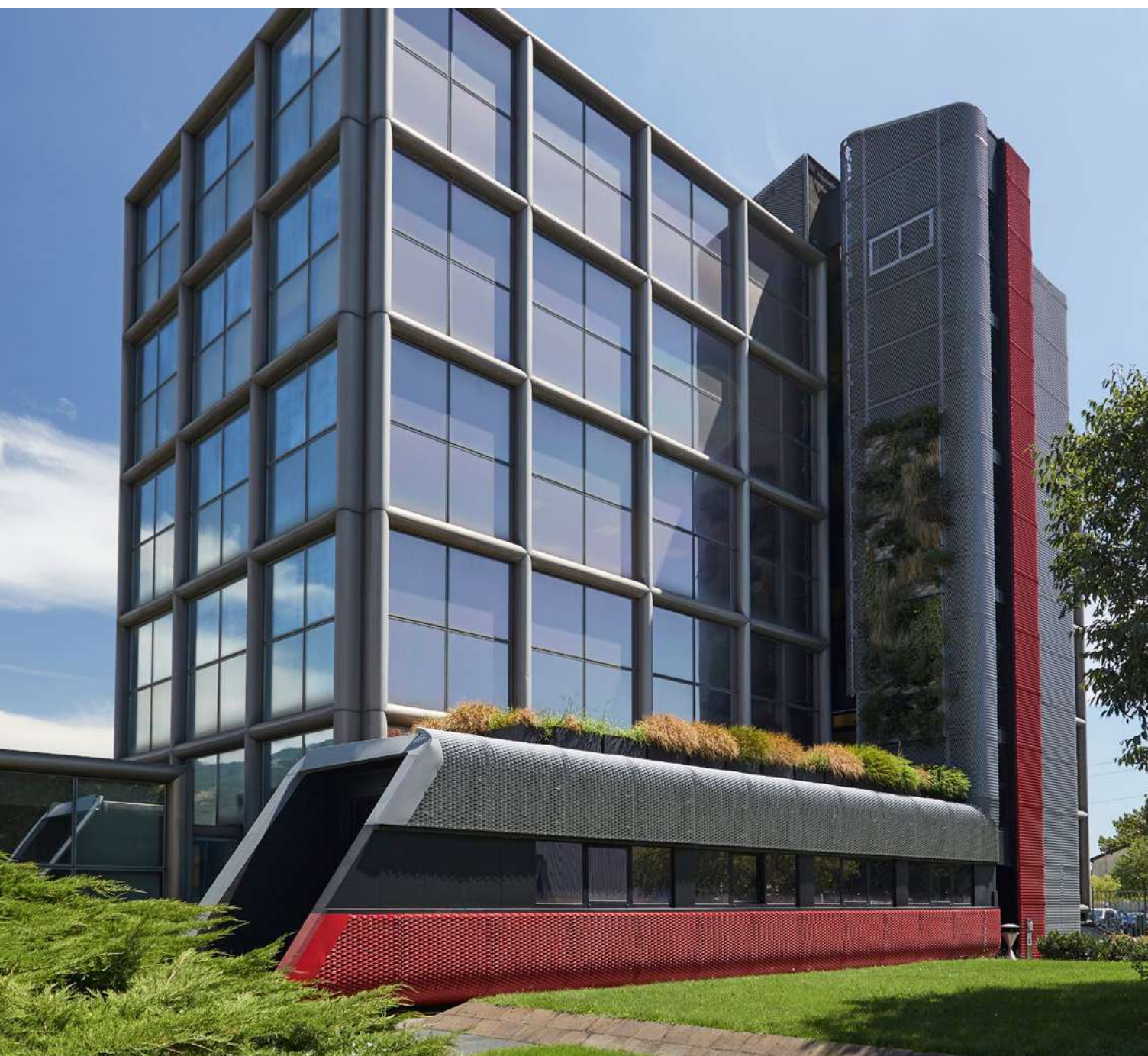
TYPE OF MESH
Brescia 75



ALFA ACCIAI

The areas involved in the redevelopment of the Brescian company are the office building and the main entrance of the company. To carry out this project, ItalMesh Siena 150 expanded mesh panels and Zero Gravity Eden vertical garden panels were used.

This solution is optimal to reduce emissions from production plants and for beautifying buildings.



LOCATION
Brescia - Italy

TOTAL SMQ
800

TYPE OF MESH
Siena 150
Zero Gravity Eden



PEARL MARZOUQ

Pearl Marzouq, an historic building located in the central area of Kuwait City, occupies an area of 5,600 square meters.

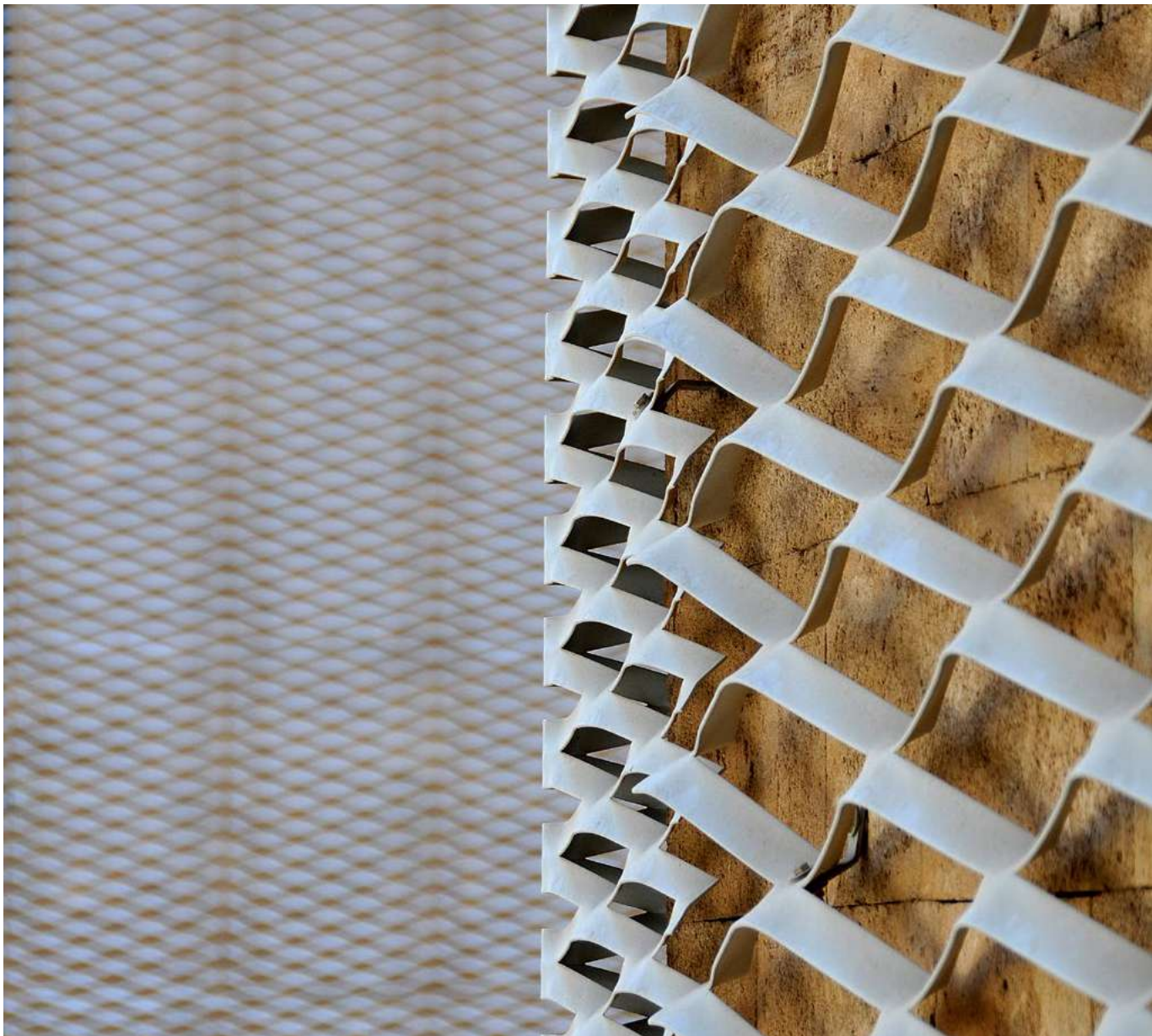
ItalMesh was chosen by the property and architectural firm Pad10 to upgrade the facade of the entire building using aluminum expanded metal mesh. To give the building a modern look, two different models of expanded metal mesh, Brescia 200 and Brescia 400, were used and powder coated to make them extremely durable, considering the climatic aspects of the area.

LOCATION
Kuwait City - Kuwait

TOTAL SMQ
13.000

TYPE OF MESH
Brescia 200 / 400

ARCHITECTURAL FIRM
Pad10



NATEX

Situated in the university campus of Liverpool, Natex is a project idealized for students. For these students' residences, ItalMesh team has been selected for the realization of external facades with the use of expanded mesh panels model Siena150 powder coated in champagne color.

The panels have been planted alternated to the windows, creating a chessboard game that runs across the whole facade, for a total of 800mq.

LOCATION
Liverpool - England

TOTAL SMQ
800

TYPE OF MESH
Siena 150





CANTARELLI

Cladding of the warehouse and office building of a company dedicated to the storage and aging of Parmigiano Reggiano in Felino, in the province of Parma. The architect was inspired by the history and tradition of the geographical area, in fact the cladding, made with the Siena 300R mesh model, recalls the shape of the cheese that the company processes.

The panels have been entirely profiled, calendared and press-folded with a particular processing in order to obtain the desired result.

The choice of the finishing characteristic, in fact, is the color of the untreated forms of Parmigiano Reggiano since 1960.





LOCATION
Parma - Italy

TOTAL SMQ
700

TYPE OF MESH
Siena 300R



KING FAHAD OPERA HOUSE

LOCATION
Riyadh - Saudi Arabia

TOTAL SMQ
3300

TYPE OF MESH
Torino 10

For ceiling of King Fahad Opera House in Saudi Arabia, ItalMesh chose the Torino 10 expanded mesh for 2600 bronze-colored panels printed with triangular figures in some of which solid-sheet metal triangles were attached, not only creating innovative visual effects, but also helping with the best sound propagation. To ensure the success of this important project, in addition to the study and concept of the panels, ItalMesh team also collaborated with sound engineers and technicians

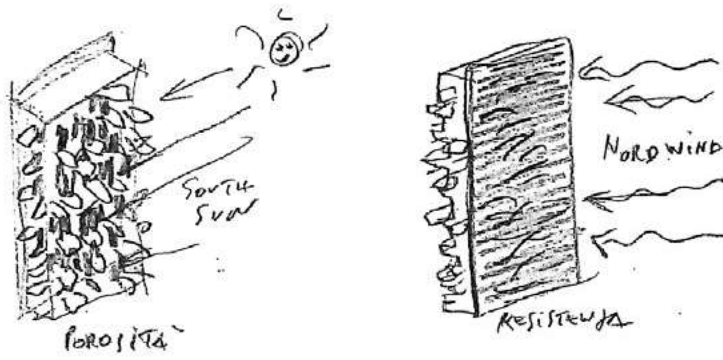
ELNOS

Elnos, a shopping mall next to Ikea Brescia, fits with ItalMesh products to renew the aesthetical impact maintaining its purposes of healthy life, eco-friendly with positive impact on the climate.



ItalMesh team has covered over 1000 mq of surface, 900 of them with expanded mesh model Siena 150 painted in mica bronze, a unique color that highlights the solar reflections and goes well with the context.





LOCATION
Brescia - Italy

TOTAL SMQ
1.000

TYPE OF MESH
Siena 150
Zero Gravity Eden

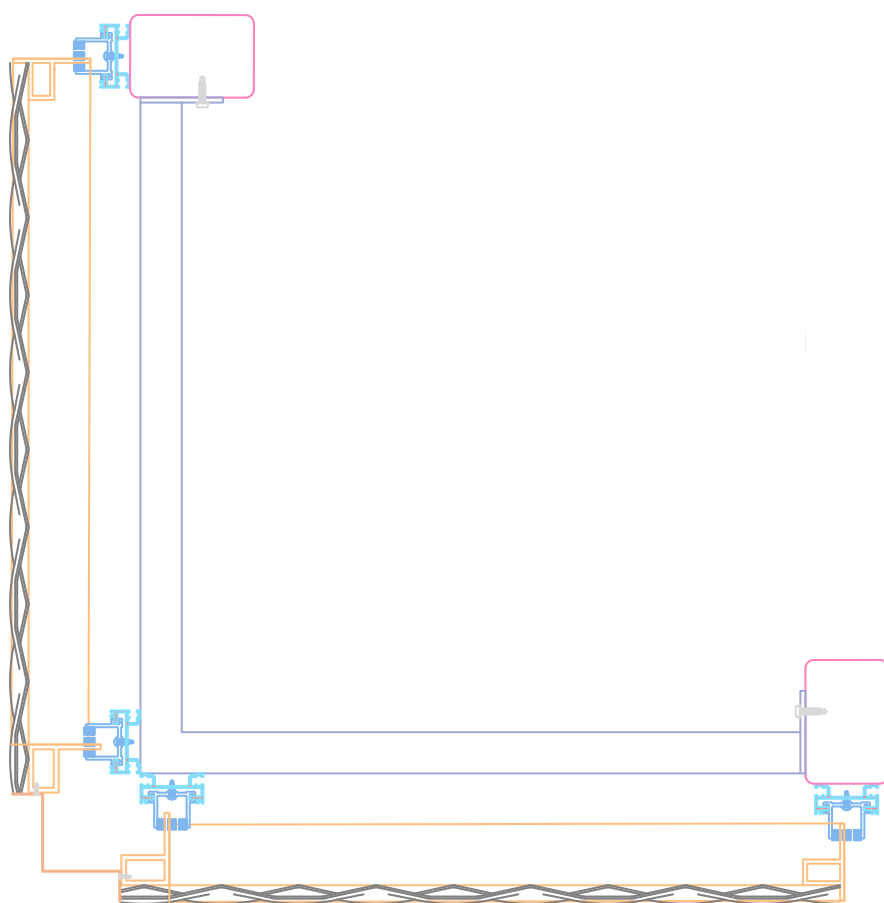
Expanded aluminum meshes are produced with 100% recyclable materials, that, combined with Zero Gravity Eden panels, guarantee a remarkable fall of CO2 and make this project an example of responsible sustainable of aspiration.



IVAR

Ivar, an Italian company specialized in the design and production of energy-efficient heating and plumbing systems, has decided to clad its new Academy with Siena 150 ItalMesh expanded metal mesh. A large orange cube whose solidity is interrupted by vertical cuts that reveal the concrete cube hiding behind the expanded metal covering.

The choice of color orange Ral 2004, which is the representative color of the Prevalle company, makes the structure unique and recognizable to all. ItalMesh team contributed to the design, production and installation of the façade cladding covering over 700 sqm. Some panels were sized and cut in order to create the movements and cuts conceived by the design.



THE WORKSHOP

LOCATION
Brescia - Italy

TOTAL SMQ
700

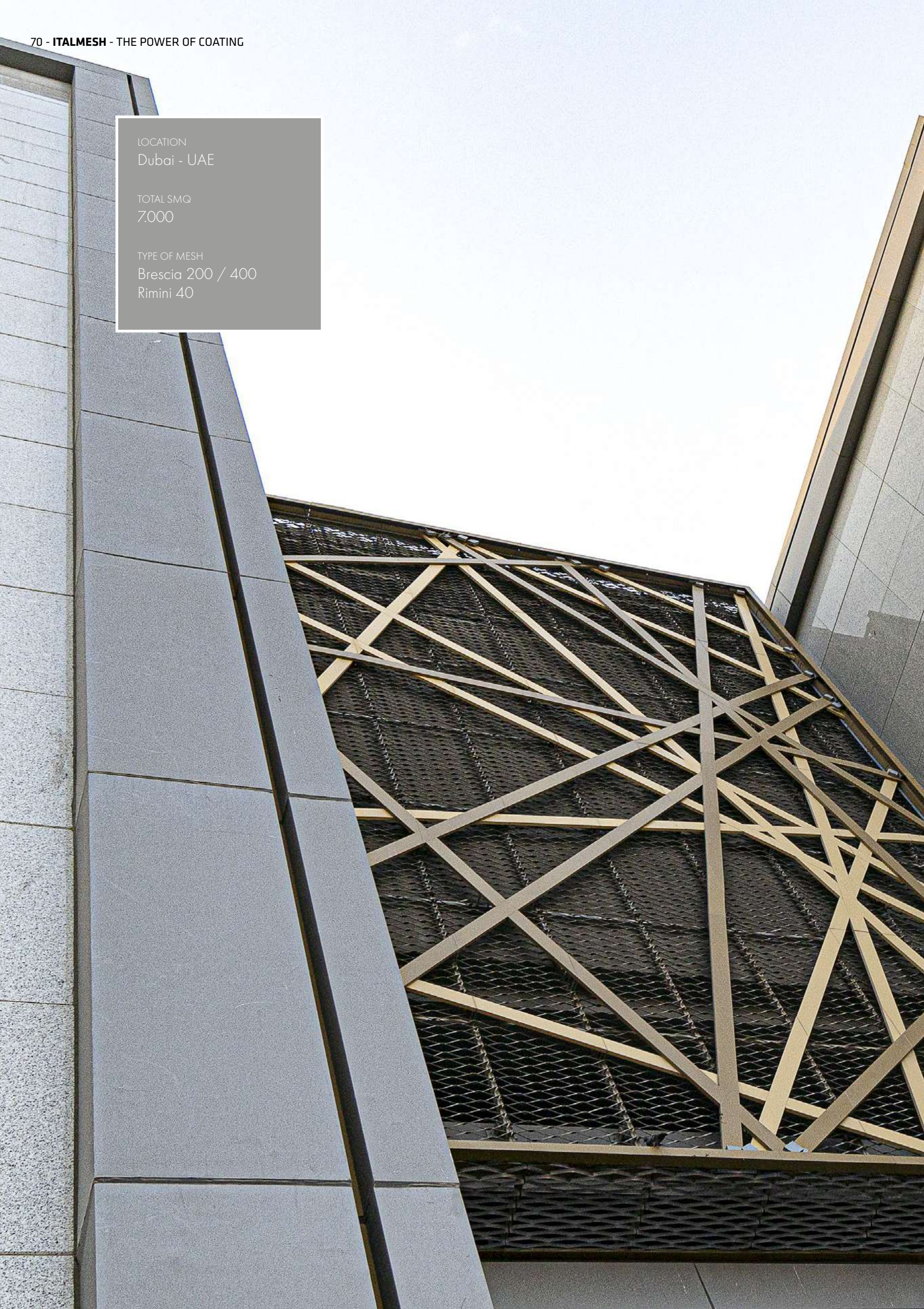
TYPE OF MESH
Siena 150



LOCATION
Dubai - UAE

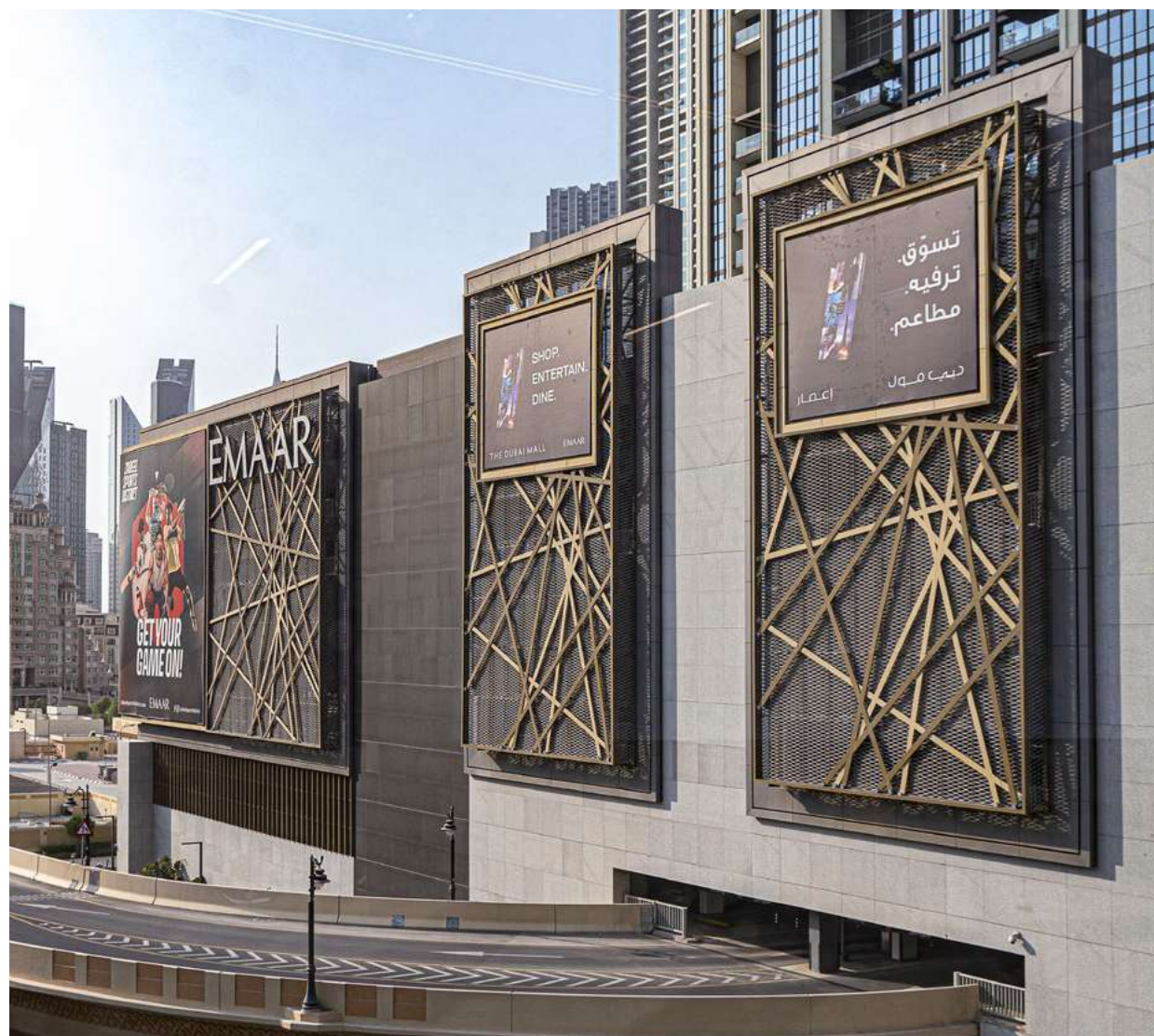
TOTAL SMQ
7.000

TYPE OF MESH
Brescia 200 / 400
Rimini 40



DUBAI MALL EXTENSION

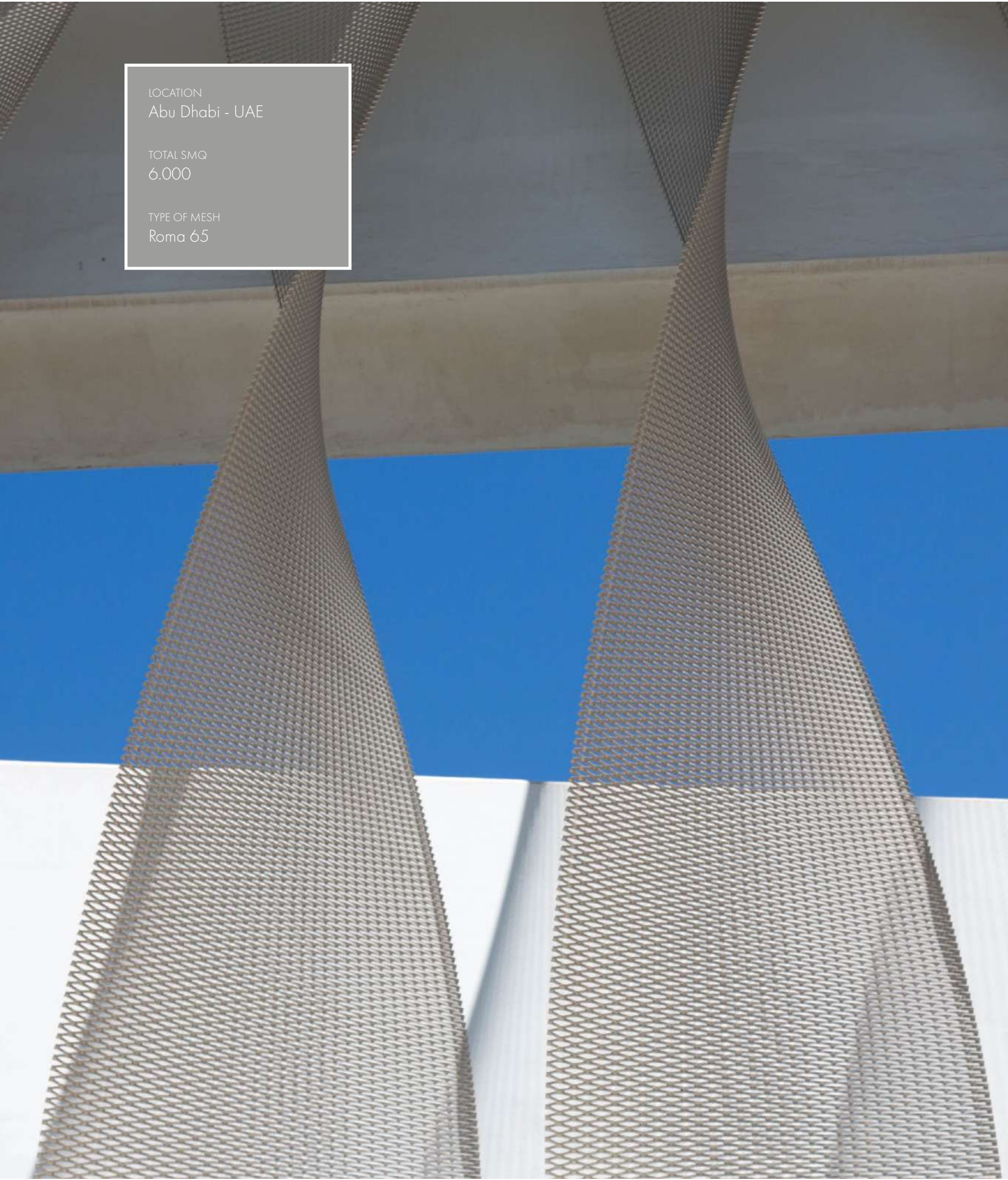
For the expansion of the largest shopping center in the world located near Dubai Down Town and Burj Khalifa, ItalMesh has created the cladding of the facades using expanded metal mesh BRESCIA 400 in aluminum, powder coated with RAL color 9007 and for the false ceiling the RIMINI 40 model in steel, powder coated with black color RAL 9005.



LOCATION
Abu Dhabi - UAE

TOTAL SMQ
6.000

TYPE OF MESH
Roma 65



YAS MALL

Yas Mall is the most innovative and attractive shopping and entertainment destination in the heart of Yas Island in Abu Dhabi. ItalMesh products were used to clad the facades of the multi-storey parking lot that accommodates up to 10,000 cars.

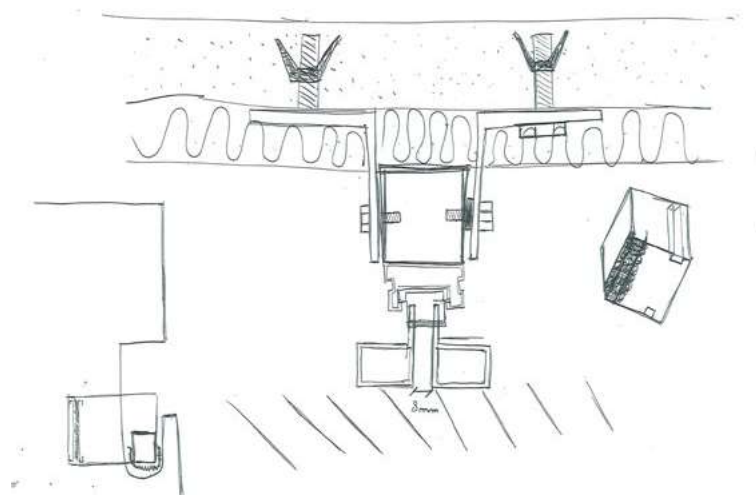
Roma 65 model nets made of AISI 316L steel and painted with a transparent finish were installed with an innovative design, in fact, ItalMesh team studied and patented a solution thanks to which the panels longer than 10 meters are twisted, creating the expected three-dimensional effect and making the appearance of the cladding sinuous and unique.



ANCONA FISH MARKET

The first modern fish market has been opened in Ancona in 1948. For this historical project, ItalMesh team designed the exterior cladding of the entire building with perforated sheet metal panels.

The peculiarity of the project is in the color. Each panel was anodized in gold color, a special process carried out in special tanks pass through by electric current in which coloring takes place.



LOCATION
Ancona - Italy

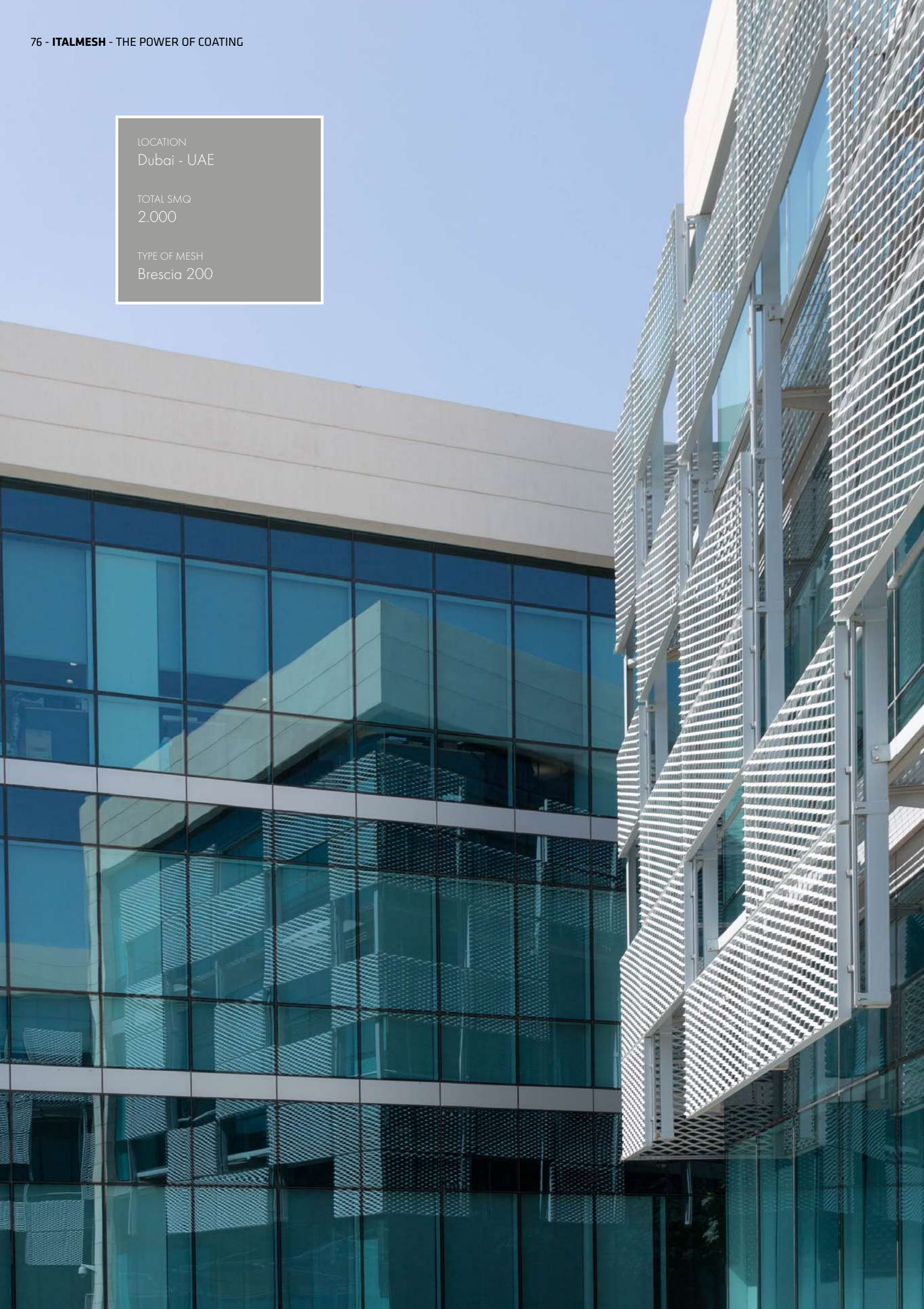
TOTAL SMQ
364

TYPE OF MESH
Anodised perforated panels

LOCATION
Dubai - UAE

TOTAL SMQ
2.000

TYPE OF MESH
Brescia 200



DSO TECHNO HUB

The first Smart City project wanted by the strategic management of the Dubai government, Techno Hub includes offices, residences, commercial spaces, sports and leisure facilities.

The buildings were designed to be completely made of glass, but in order to shield some areas, the designers realized solar shading with expanded mesh. ItalMesh has created and installed the panels on a structure with uprights painted in gray RAL 9006.



ALEJA LJUBLJANA

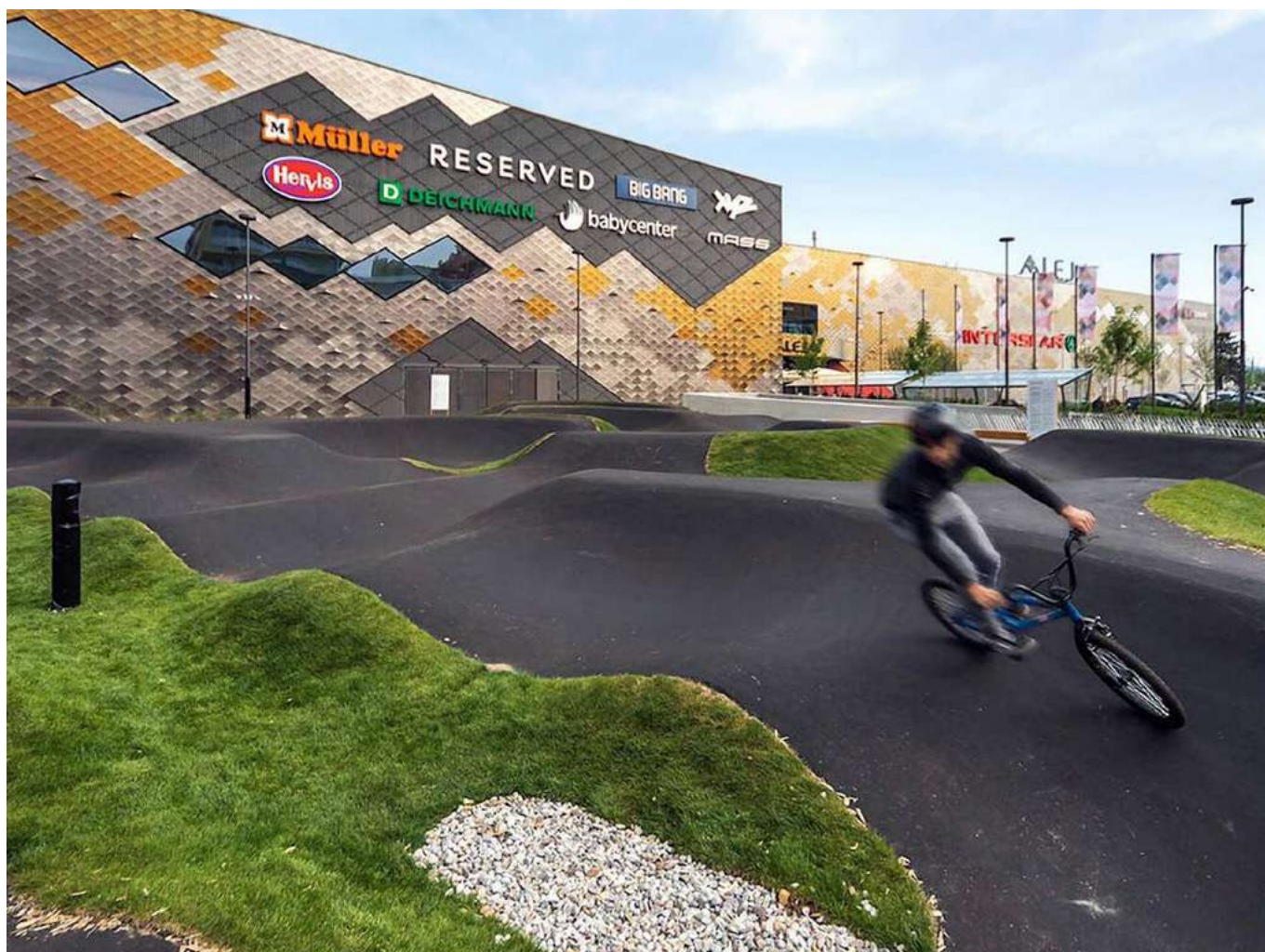
The cladding of the facade of the shopping center in Ljubljana, created in collaboration with Pichler company, involves the use of different materials. ItalMesh contributed to its realization, supplying 530 panels of ROMA 85 and BRESCIA 200 meshes in aluminum powder coated.

To satisfy the client, the panels were water-cut in a rhomboidal shape and entirely profiled, to make the structure rigid and flat.

LOCATION
Ljubiana - Slovenia

TOTAL SMQ
600

TYPE OF MESH
Roma 85 / Brescia 200

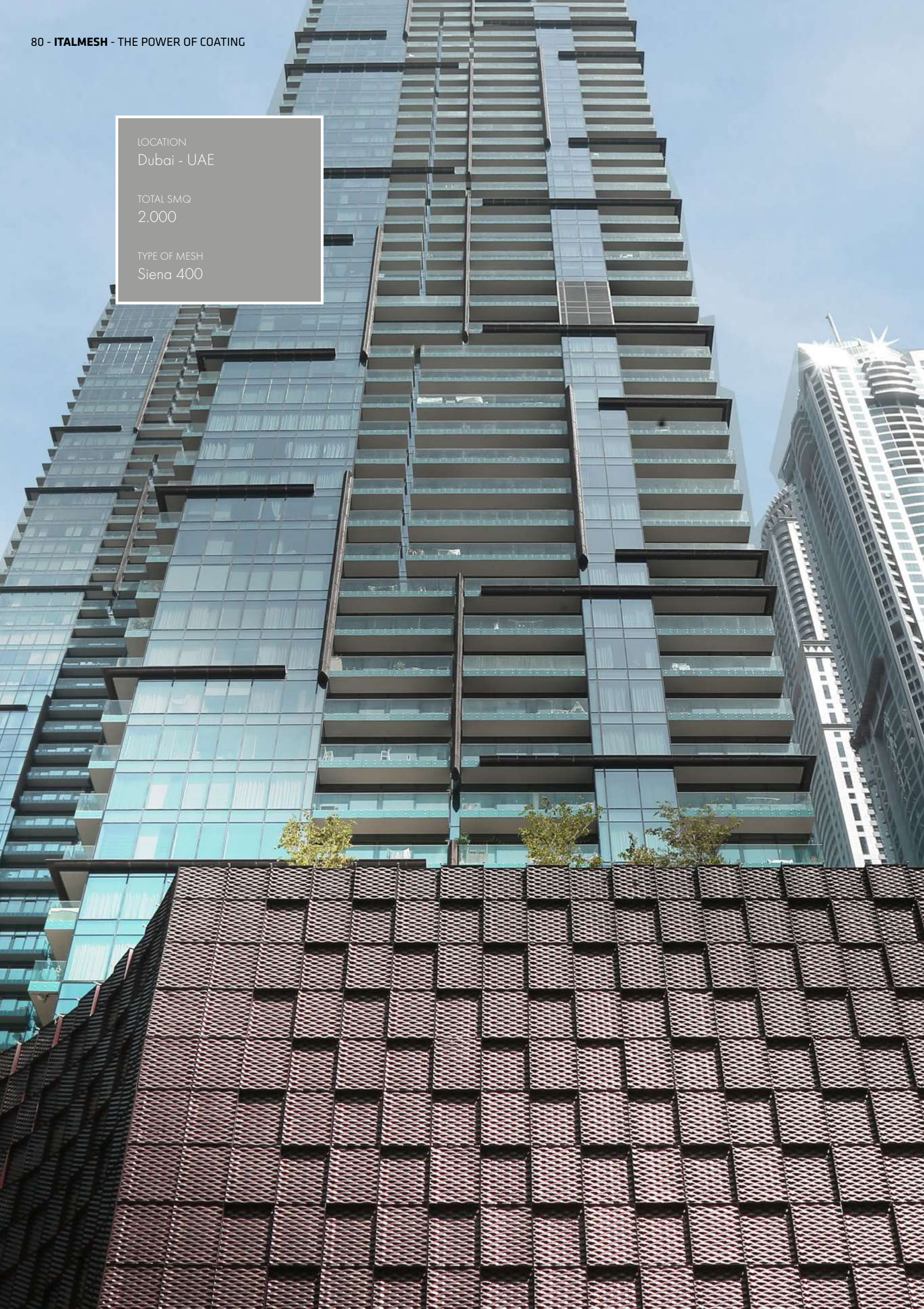




LOCATION
Dubai - UAE

TOTAL SMQ
2.000

TYPE OF MESH
Siena 400





MARINA GATE

ItalMesh expanded metal mesh panels were used for the cladding of the facade of the multi-storey car park of the Marina Gate buildings, which overlook the Dubai Marina. Siena 400 model mesh in aluminum, powder coated, have been used in a way to create a game of contrasts while guaranteeing transparency and shading. It's a very unique and innovative facade.

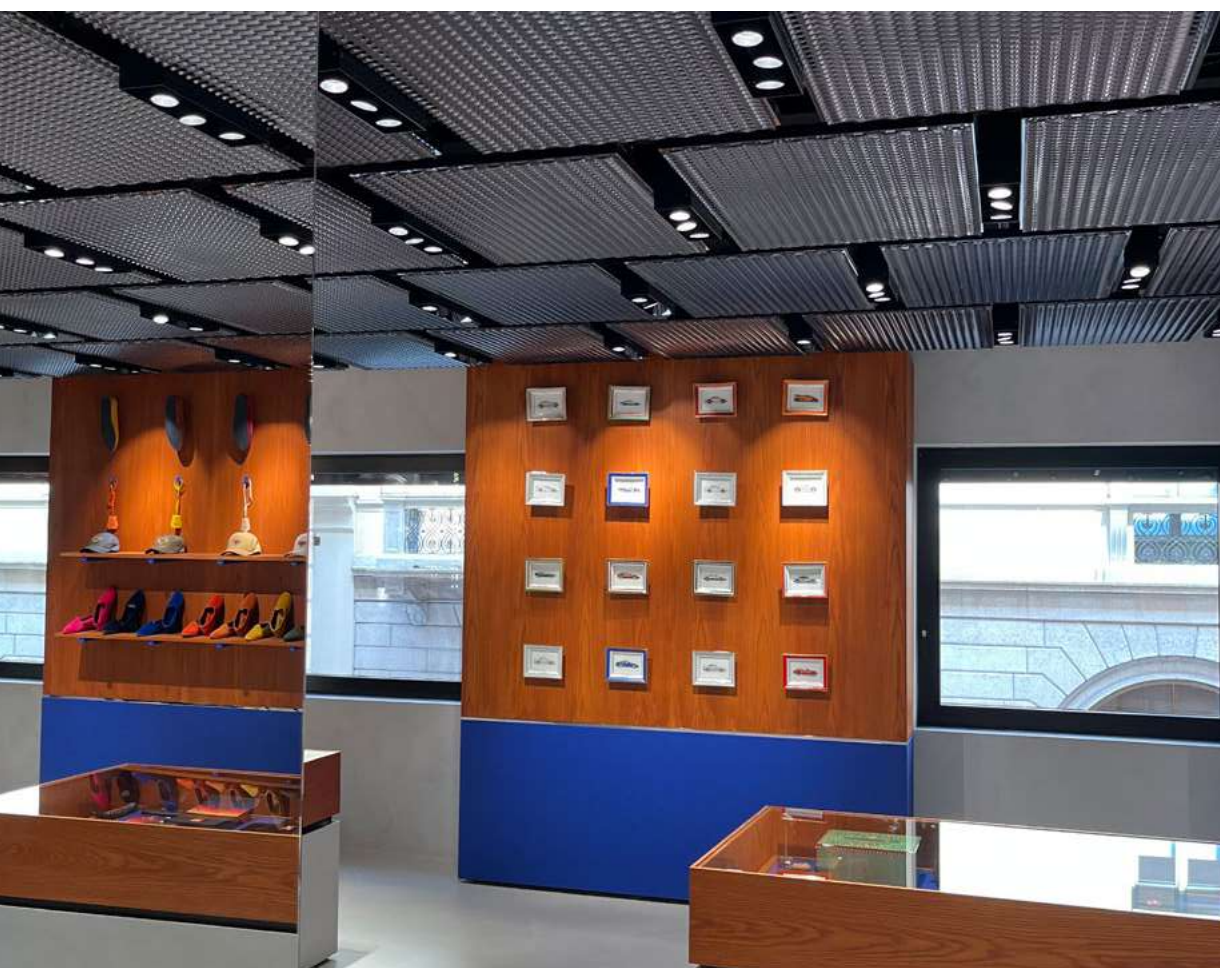


LARUSMIANI SHOWROOM

Acoustic functionality, comfort, elegance, lightness of the panels, ease remove and an always excellent aesthetic result. Larusmiani renounces its presence within the fashion district with a two-level store that houses the Automotive gallery and the first Luxury Experience Lab in the world. The luxury brand chose ItalMesh for the creation of the new false ceiling with a style capable of combining heritage and innovation, in the name of absolute quality in full synergy with the brand's style and values.

90 square meters of 2 mm expanded mesh panels in aluminum model "Siena 70", were used all made to follow the pre-existing structure for which they have been fixed.

The panels do not completely cover the area, they are intentionally separated from each other to confer volume and depth to the environment. Semi-gloss blackish blue gives an unmistakable elegance.



LOCATION
Milan - Italy

TOTAL SMQ
90

TYPE OF MESH
Siena 70





PLAY RESTAURANT

ItalMesh worked on the interior design of Play Restaurant, one of the most popular restaurants and lounge bars in Dubai, located on the 36th floor of the well-known Hotel “The H Dubai”.

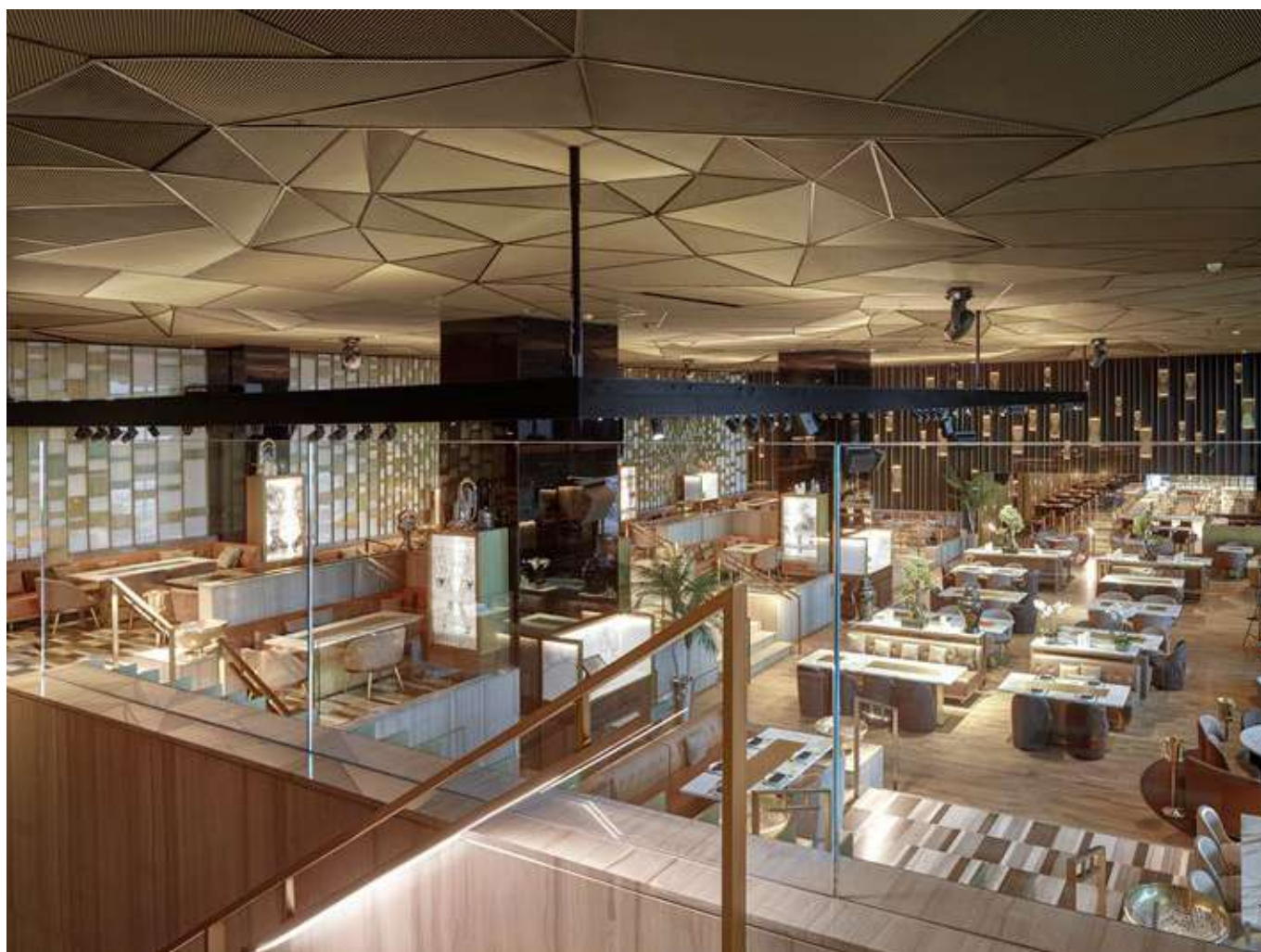
For Play Restaurant, ItalMesh team designed and realized a three-dimensional false ceiling for which the structure and the meshes were entirely produced in Italy.

In order to create the visual effect requested by the architects, panels of different shapes and sizes were used with same meshes direction.

LOCATION
Dubai - UAE

TOTAL SMQ
290

TYPE OF MESH
Torino 20



BONSIGNORI INSTITUTE

Bonsignori institute in Remedello is dressed in ItalMesh and Zero Gravity Eden, making the study of plants more accessible and immediate for students, enhancing sustainable architecture and raising awareness of greater responsibility and attention to the world around us in younger minds. 50sqm of Siena 150 model stretched mesh painted beige with iridescent effects were used, with a 28sqm vertical garden highlighting the entrance to the facility.

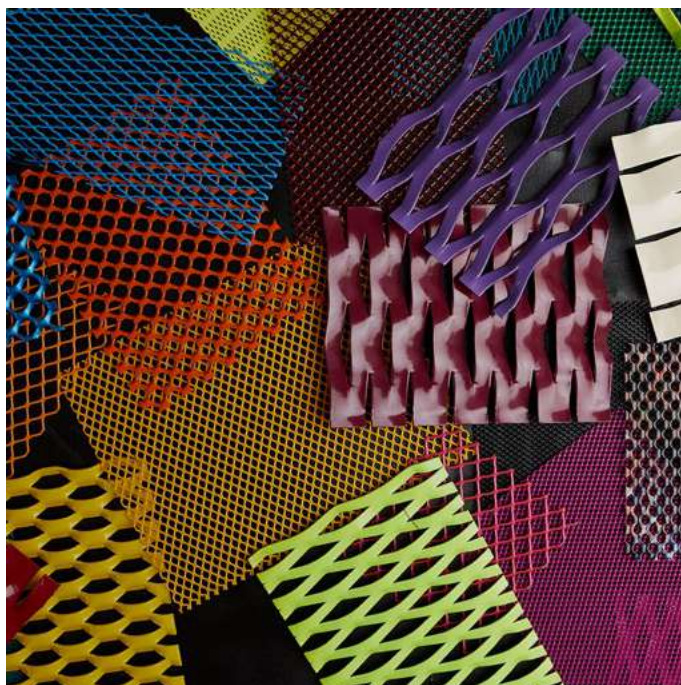
LOCATION
Brescia – Italy

TOTAL SMQ
50

TYPE OF MESH
Siena 150
Zero Gravity Eden







ItalMesh®
Dressing Innovative Projects

ItalMesh srl
Via Artigianale, 65
Montirone
Brescia - Italy
Ph. +39 030 2170539
italy@italmesh.com

UAE Marketing Office
United Arab Emirates DMCC
Ph. +971 509 533229
f.dicaro@italmesh.com



italmesh.com