



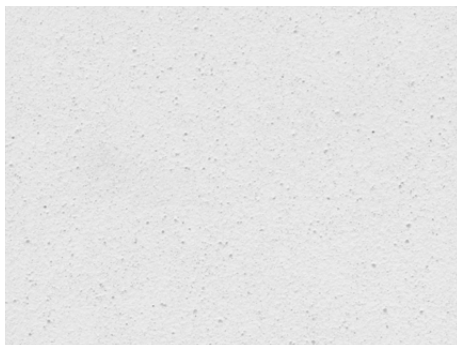
**RIEDER**

# öko skin

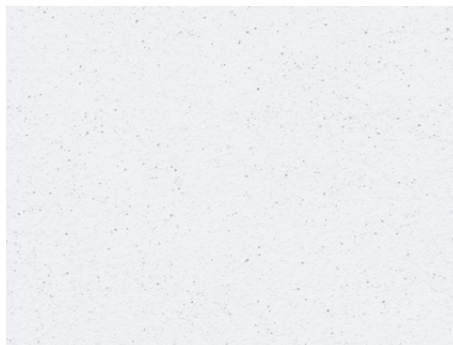
polar white

Glassfibre reinforced concrete is a natural material that blends with nature and the environment. öko skin is through color including iron oxide and natural additives. The play of colors within a certain color shade is intentional and enhances the vivid character of concrete.

Each palette includes three surfaces ferro, ferro light and matt which create a naturally varied and vivid surface. The mixing of concrete slats from various pallets and layers for an optimal installation result is recommended.



**FE ferro**  
sandblasted at high pressure, rough surface

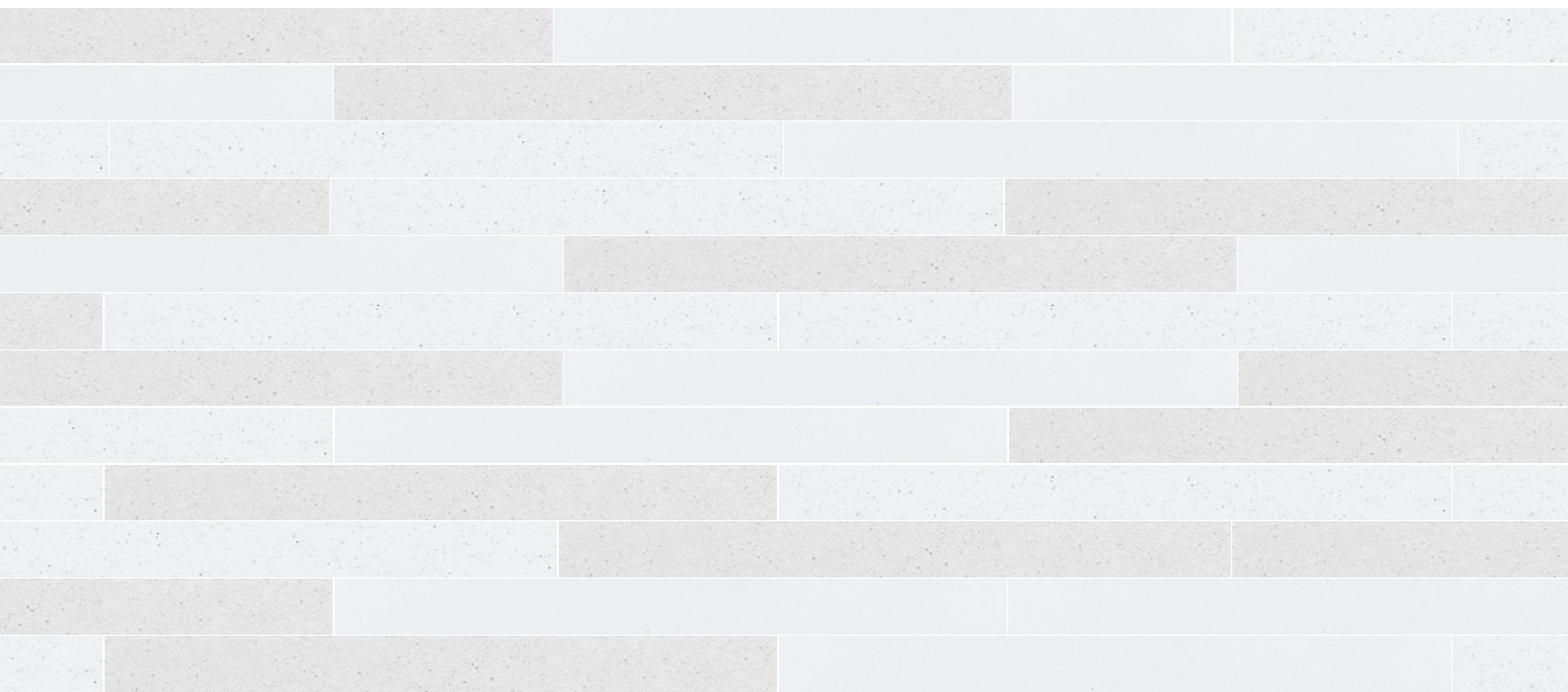


**FL ferro light**  
sandblasted at low pressure, rough surface



**MA matt**  
natural blushing effect, smooth surface

Due to technical reasons printed colors may differ from the original shade. Please be aware that samples can never show all characteristics of concrete.  
For more information please refer to the „öko skin characteristics“ at [www.rieder.cc](http://www.rieder.cc).





**RIEDER**

## öko skin off-white

Glassfibre reinforced concrete is a natural material that blends with nature and the environment. öko skin is through color including iron oxide and natural additives. The play of colors within a certain color shade is intentional and enhances the vivid character of concrete.

Each palette includes three surfaces ferro, ferro light and matt which create a naturally varied and vivid surface. The mixing of concrete slats from various pallets and layers for an optimal installation result is recommended.



**FE ferro**

sandblasted at high pressure, rough surface



**FL ferro light**

sandblasted at low pressure, rough surface



**MA matt**

natural blushing effect, smooth surface

Due to technical reasons printed colors may differ from the original shade. Please be aware that samples can never show all characteristics of concrete.  
For more information please refer to the „öko skin characteristics“ at [www.rieder.cc](http://www.rieder.cc).







**RIEDER**

# öko skin

## ivory

Glassfibre reinforced concrete is a natural material that blends with nature and the environment. öko skin is through color including iron oxide and natural additives. The play of colors within a certain color shade is intentional and enhances the vivid character of concrete.

Each palette includes three surfaces ferro, ferro light and matt which create a naturally varied and vivid surface. The mixing of concrete slats from various pallets and layers for an optimal installation result is recommended.



**FE ferro**

sandblasted at high pressure, rough surface



**FL ferro light**

sandblasted at low pressure, rough surface



**MA matt**

natural blushing effect, smooth surface

Due to technical reasons printed colors may differ from the original shade. Please be aware that samples can never show all characteristics of concrete.  
For more information please refer to the „öko skin characteristics“ at [www.rieder.cc](http://www.rieder.cc).







**RIEDER**

# öko skin

## silvergrey

Glassfibre reinforced concrete is a natural material that blends with nature and the environment. öko skin is through color including iron oxide and natural additives. The play of colors within a certain color shade is intentional and enhances the vivid character of concrete.

Each palette includes three surfaces ferro, ferro light and matt which create a naturally varied and vivid surface. The mixing of concrete slats from various pallets and layers for an optimal installation result is recommended.



**FE ferro**  
sandblasted at high pressure, rough surface



**FL ferro light**  
sandblasted at low pressure, rough surface



**MA matt**  
natural blushing effect, smooth surface

Due to technical reasons printed colors may differ from the original shade. Please be aware that samples can never show all characteristics of concrete.  
For more information please refer to the „öko skin characteristics“ at [www.rieder.cc](http://www.rieder.cc).







**RIEDER**

# öko skin

## chrome

Glassfibre reinforced concrete is a natural material that blends with nature and the environment. öko skin is through color including iron oxide and natural additives. The play of colors within a certain color shade is intentional and enhances the vivid character of concrete.

Each palette includes three surfaces ferro, ferro light and matt which create a naturally varied and vivid surface. The mixing of concrete slats from various pallets and layers for an optimal installation result is recommended.



**FE ferro**

sandblasted at high pressure, rough surface



**FL ferro light**

sandblasted at low pressure, rough surface



**MA matt**

natural blushing effect, smooth surface

Due to technical reasons printed colors may differ from the original shade. Please be aware that samples can never show all characteristics of concrete.  
For more information please refer to the „öko skin characteristics“ at [www.rieder.cc](http://www.rieder.cc).





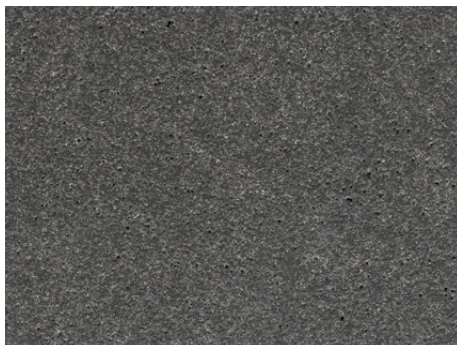


**RIEDER**

## öko skin anthracite

Glassfibre reinforced concrete is a natural material that blends with nature and the environment. öko skin is through color including iron oxide and natural additives. The play of colors within a certain color shade is intentional and enhances the vivid character of concrete.

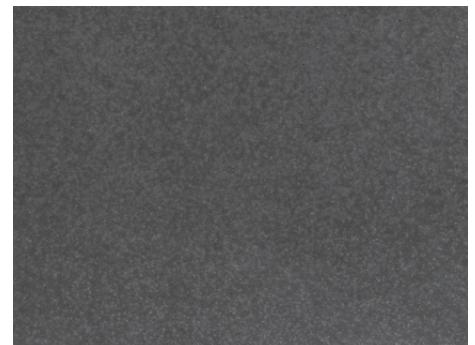
Each palette includes three surfaces ferro, ferro light and matt which create a naturally varied and vivid surface. The mixing of concrete slats from various pallets and layers for an optimal installation result is recommended.



**FE ferro**  
sandblasted at high pressure, rough surface



**FL ferro light**  
sandblasted at low pressure, rough surface



**MA matt**  
natural blushing effect, smooth surface

Due to technical reasons printed colors may differ from the original shade. Please be aware that samples can never show all characteristics of concrete.  
For more information please refer to the „öko skin characteristics“ at [www.rieder.cc](http://www.rieder.cc).





**RIEDER**

# öko skin

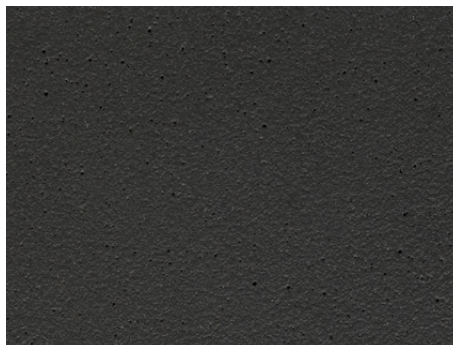
## liquide black

Glassfibre reinforced concrete is a natural material that blends with nature and the environment. öko skin is through color including iron oxide and natural additives. The play of colors within a certain color shade is intentional and enhances the vivid character of concrete.

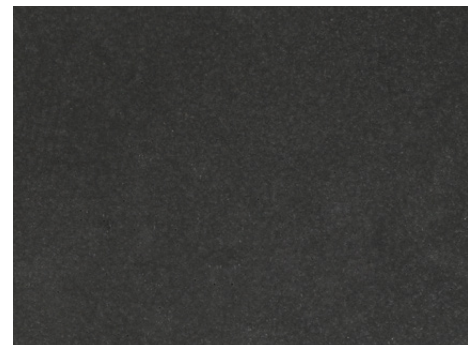
Each palette includes three surfaces ferro, ferro light and matt which create a naturally varied and vivid surface. The mixing of concrete slats from various pallets and layers for an optimal installation result is recommended.



**FE ferro**  
sandblasted at high pressure, rough surface



**FL ferro light**  
sandblasted at low pressure, rough surface



**MA matt**  
natural blushing effect, smooth surface

Due to technical reasons printed colors may differ from the original shade. Please be aware that samples can never show all characteristics of concrete.  
For more information please refer to the „öko skin characteristics“ at [www.rieder.cc](http://www.rieder.cc).







**RIEDER**

# öko skin

## sahara

Glassfibre reinforced concrete is a natural material that blends with nature and the environment. öko skin is through color including iron oxide and natural additives. The play of colors within a certain color shade is intentional and enhances the vivid character of concrete.

Each palette includes three surfaces ferro, ferro light and matt which create a naturally varied and vivid surface. The mixing of concrete slats from various pallets and layers for an optimal installation result is recommended.



**FE ferro**  
sandblasted at high pressure, rough surface



**FL ferro light**  
sandblasted at low pressure, rough surface



**MA matt**  
natural blushing effect, smooth surface

Due to technical reasons printed colors may differ from the original shade. Please be aware that samples can never show all characteristics of concrete.  
For more information please refer to the „öko skin characteristics“ at [www.rieder.cc](http://www.rieder.cc).







**RIEDER**

## öko skin sandstone

Glassfibre reinforced concrete is a natural material that blends with nature and the environment. öko skin is through color including iron oxide and natural additives. The play of colors within a certain color shade is intentional and enhances the vivid character of concrete.

Each palette includes three surfaces ferro, ferro light and matt which create a naturally varied and vivid surface. The mixing of concrete slats from various pallets and layers for an optimal installation result is recommended.



**FE ferro**  
sandblasted at high pressure, rough surface



**FL ferro light**  
sandblasted at low pressure, rough surface



**MA matt**  
natural blushing effect, smooth surface

Due to technical reasons printed colors may differ from the original shade. Please be aware that samples can never show all characteristics of concrete.  
For more information please refer to the „öko skin characteristics“ at [www.rieder.cc](http://www.rieder.cc).







**RIEDER**

# öko skin

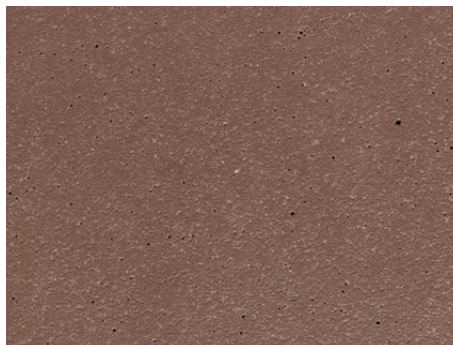
## terra

Glassfibre reinforced concrete is a natural material that blends with nature and the environment. öko skin is through color including iron oxide and natural additives. The play of colors within a certain color shade is intentional and enhances the vivid character of concrete.

Each palette includes three surfaces ferro, ferro light and matt which create a naturally varied and vivid surface. The mixing of concrete slats from various pallets and layers for an optimal installation result is recommended.



**FE ferro**  
sandblasted at high pressure, rough surface



**FL ferro light**  
sandblasted at low pressure, rough surface



**MA matt**  
natural blushing effect, smooth surface

Due to technical reasons printed colors may differ from the original shade. Please be aware that samples can never show all characteristics of concrete.  
For more information please refer to the „öko skin characteristics“ at [www.rieder.cc](http://www.rieder.cc).







**RIEDER**

# öko skin

## terracotta

Glassfibre reinforced concrete is a natural material that blends with nature and the environment. öko skin is through color including iron oxide and natural additives. The play of colors within a certain color shade is intentional and enhances the vivid character of concrete.

Each palette includes three surfaces ferro, ferro light and matt which create a naturally varied and vivid surface. The mixing of concrete slats from various pallets and layers for an optimal installation result is recommended.



**FE ferro**  
sandblasted at high pressure, rough surface

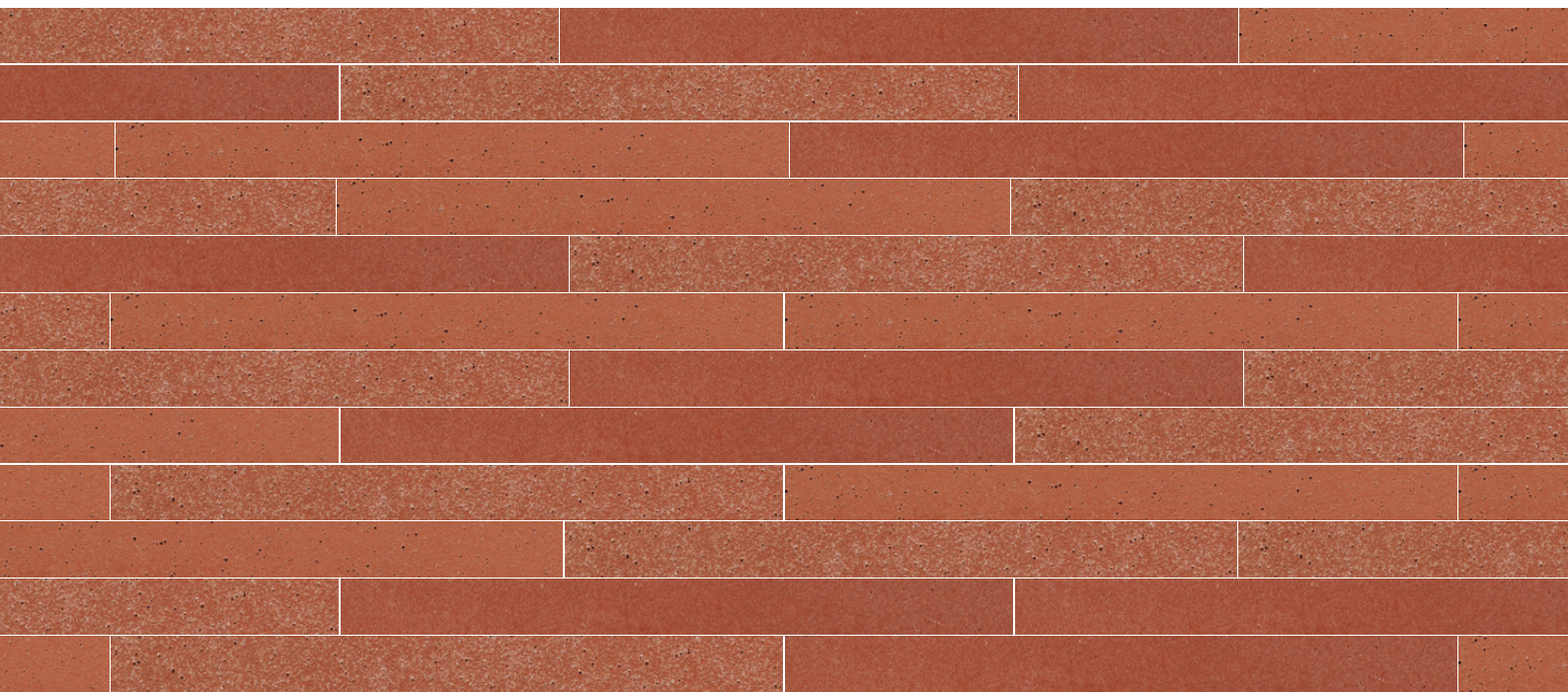


**FL ferro light**  
sandblasted at low pressure, rough surface



**MA matt**  
natural blushing effect, smooth surface

Due to technical reasons printed colors may differ from the original shade. Please be aware that samples can never show all characteristics of concrete.  
For more information please refer to the „öko skin characteristics“ at [www.rieder.cc](http://www.rieder.cc).







**RIEDER**

# öko skin

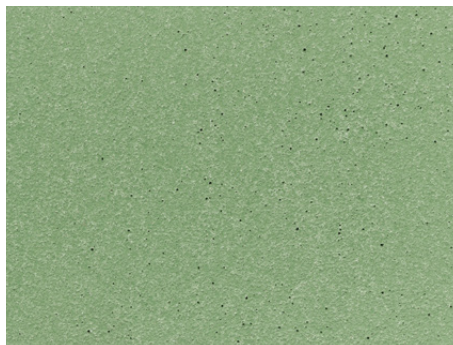
## green

Glassfibre reinforced concrete is a natural material that blends with nature and the environment. öko skin is through color including iron oxide and natural additives. The play of colors within a certain color shade is intentional and enhances the vivid character of concrete.

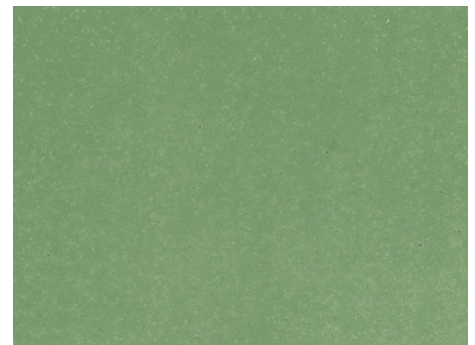
Each palette includes three surfaces ferro, ferro light and matt which create a naturally varied and vivid surface. The mixing of concrete slats from various pallets and layers for an optimal installation result is recommended.



**FE ferro**  
sandblasted at high pressure, rough surface



**FL ferro light**  
sandblasted at low pressure, rough surface



**MA matt**  
natural blushing effect, smooth surface

Due to technical reasons printed colors may differ from the original shade. Please be aware that samples can never show all characteristics of concrete.  
For more information please refer to the „öko skin characteristics“ at [www.rieder.cc](http://www.rieder.cc).

