



Rainscreen brick façade system suitable
for standard or curtain wall installations

Brick to Click[®]

Thermally efficient sustainably produced system for easy installation

DCA
F A C A D E

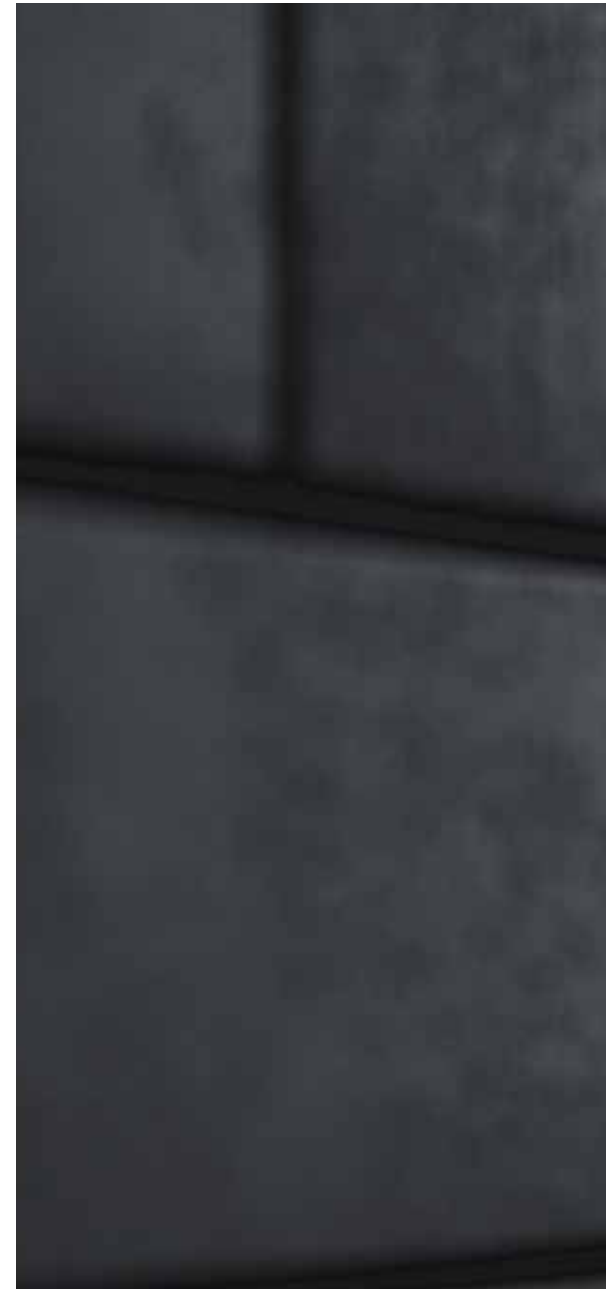
Quick and easy installation that is not dependent on the weather.

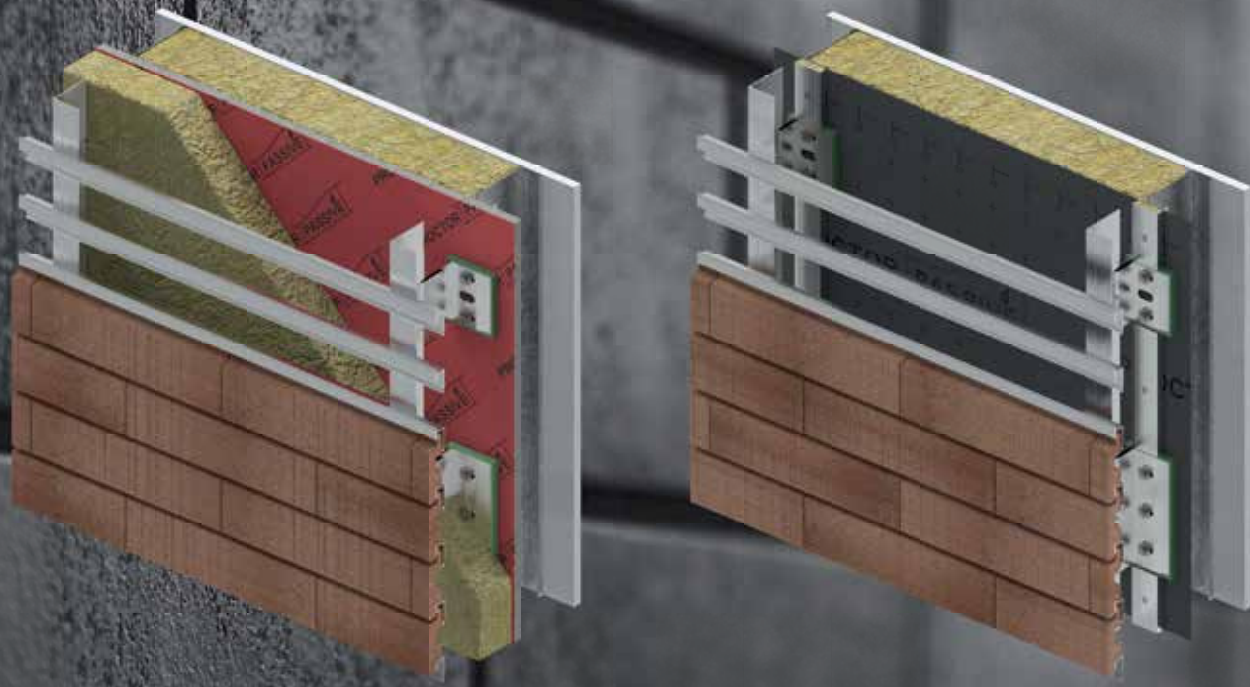
Brick to Click[®]

With Brick to Click, issues generally associated with traditional brick installations like seismic stability, rusting brick ties and effloresce are over come by an innovative light weight thermally efficient product for both curtain wall and standard façade installations

Ströher Brick to Click. Clinker engineering, made in Germany.

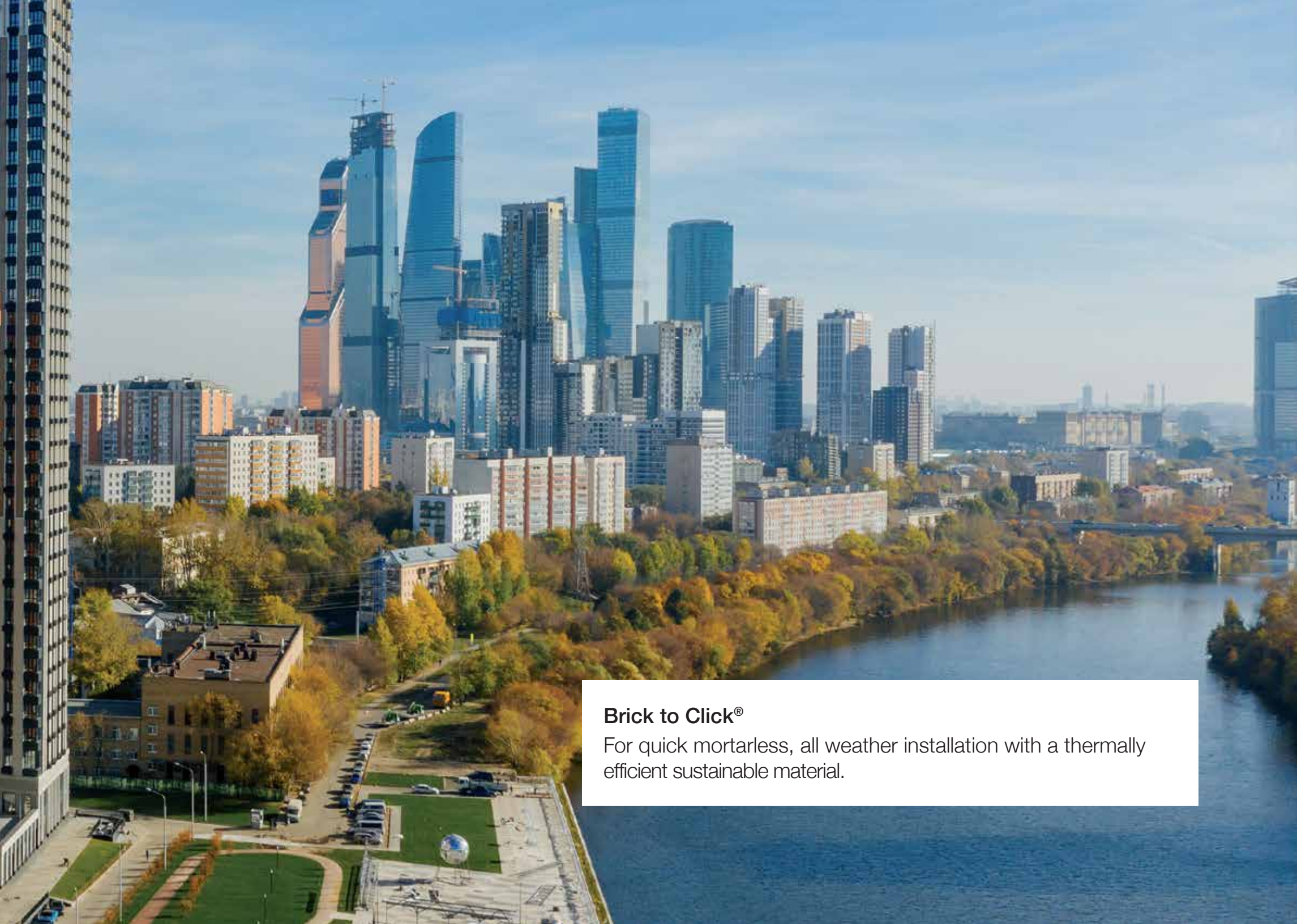
Ströher offers genuine clinker brick to click slips extruded with the same process they have used for last 150 years to ensure the sintered ceramic has low porosity, is colour fast with a 25 year frost resistance warranty.





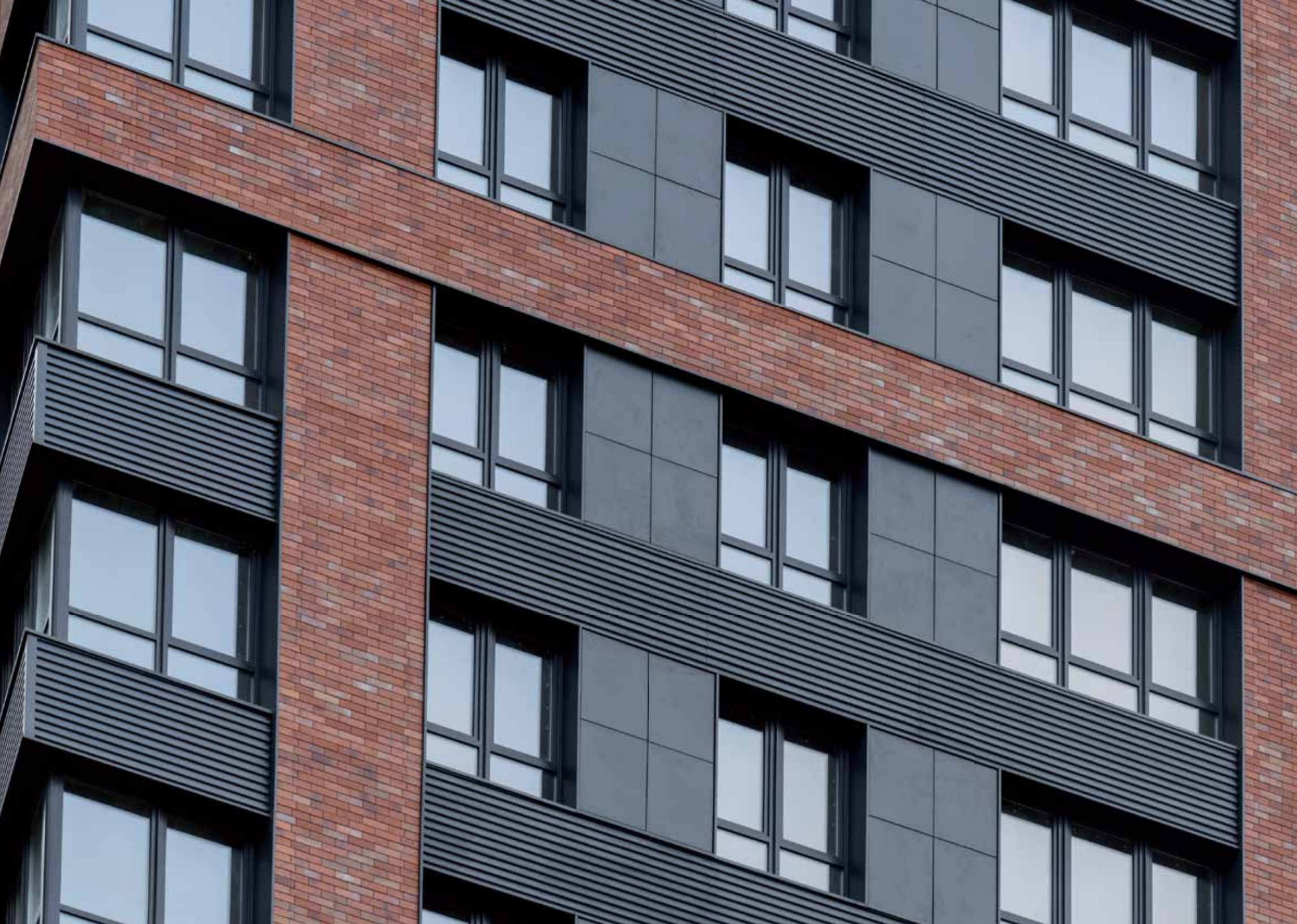
With an R value in excess of 2.5 depending on the wall build up, Brick to Click is a thermally efficient light weight brick cladding solution.





Brick to Click®

For quick mortarless, all weather installation with a thermally efficient sustainable material.





Brick to click combines the sustainably produced clinker bricks with all the benefits of a cavity system.

The advantages at a glance:



SIMPLE, EFFICIENT AND ECONOMICAL

- Simple to assemble by hooking in the clinker brick slips.
- No mortar, no water and thus no efflorescence.
- Assembly and implementation not seasonal nor dependent on weather conditions.
- Simple balancing of tolerances when renovating existing buildings.
- Extremely low maintenance and repair costs.
- Energy cost savings due to integrated thermal insulation.



TRIED AND TESTED

- **Efficient thermal protection** with an R value in excess of 2.5 pending wall build up.
- **Moisture and condensation protection** from the use of a cavity system.
- **With over 1,000,000 m2 installed** in some of Europe's harshest climates Brick to click has a proven track record.
- **Tested to 1530.1 standards** Brick to Click meets the current non-combustible cladding requirement for both Nz and Australia.
- **Additional acoustic benefits.**



STRONG, SEALED AND RESISTANT

- Maximum facade protection provided by genuine clinker against the likes of frost, heat, driving rain, snow and hail.
- Resistant to acids, moss, algae and dirt.
- Simple to clean off external soiling, e.g. graffiti.



SUSTAINABILITY

- With certification from the German EPD and an accreditation of the DIN 5001 energy management the Brick to Click is sustainably produced.

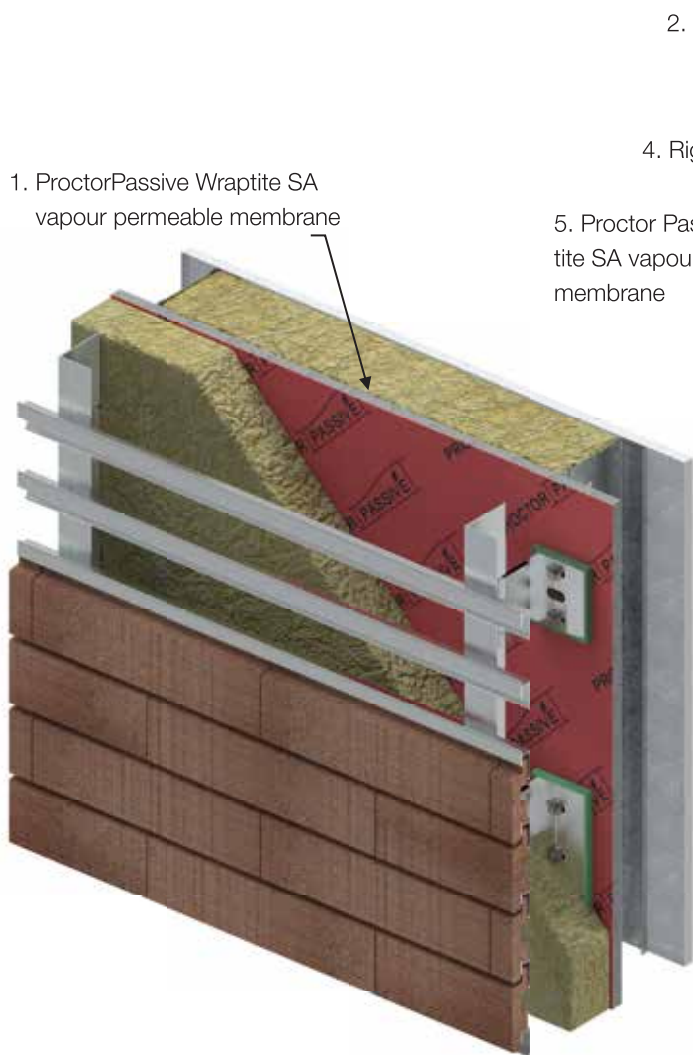


Brick to Click®

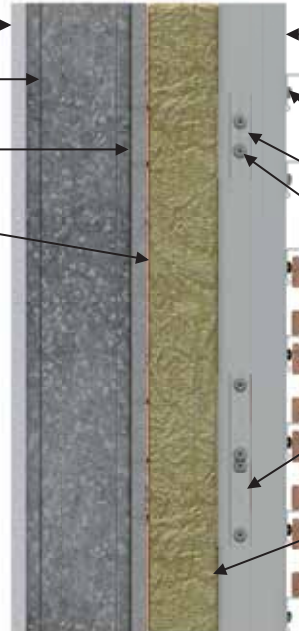
A light weight thermally efficient solution
for all brick cladding projects.

Rainscreen Brick Facade

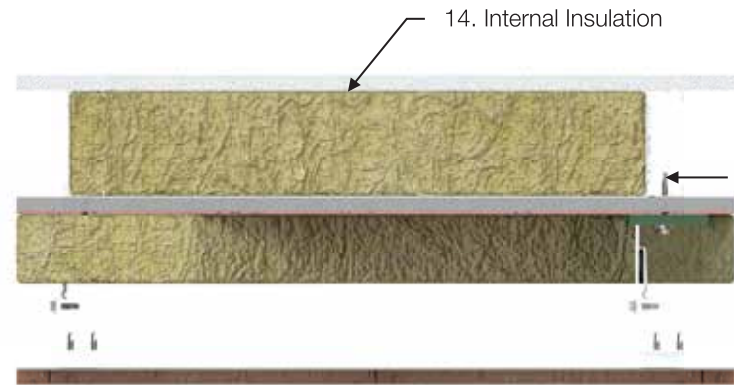
OPTION 1: Wall Build Up



- 2. Plasterboard
- 3. Steel stud
- 4. Rigid air barrier
- 5. Proctor Passive Wraptite SA vapour permeable membrane



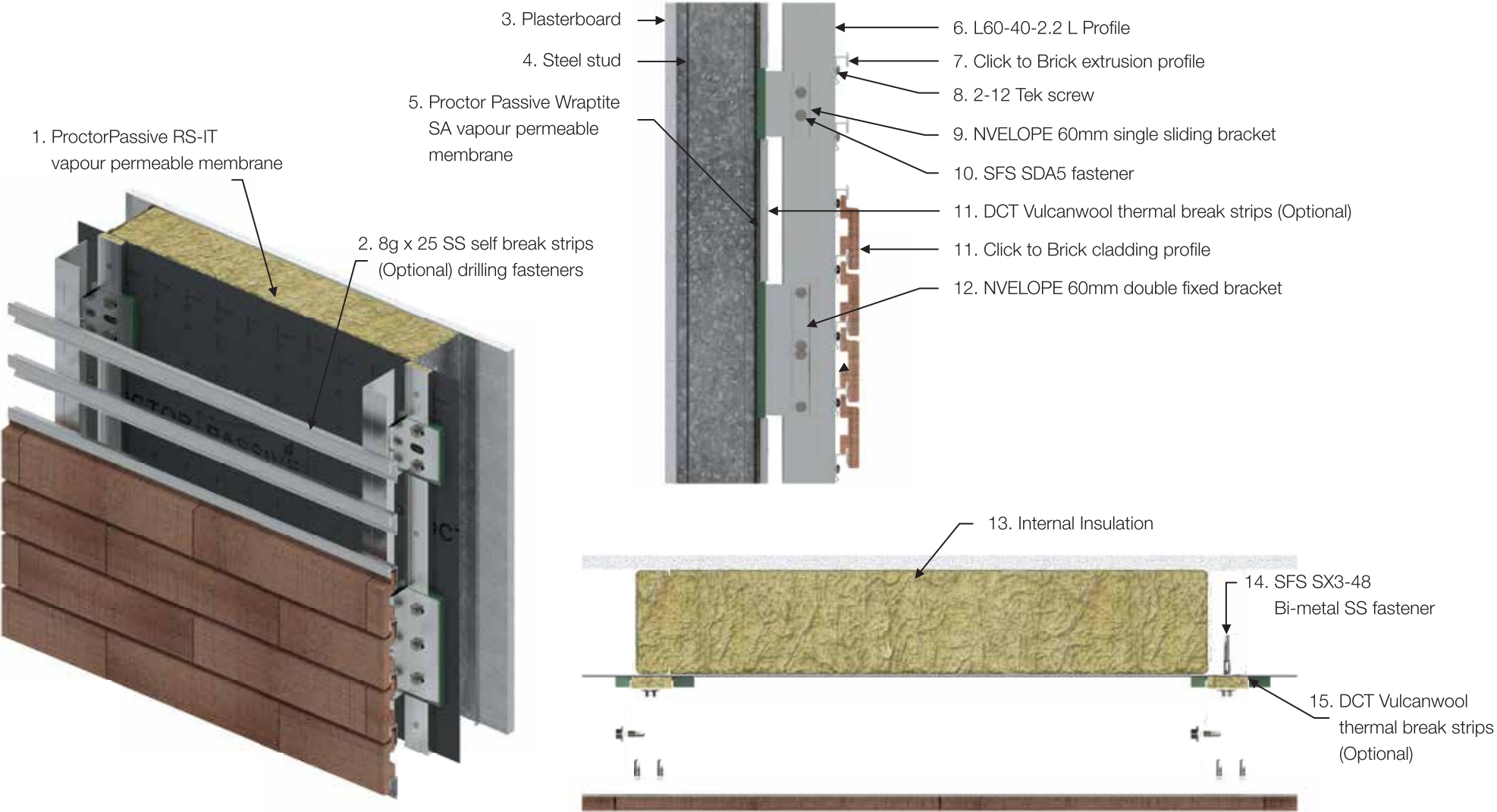
- 6. L60-40-2.2 L Profile
- 7. Click to Brick extrusion profile
- 8. 2-12 Tek screw
- 9. NVELOPE 90mm single sliding bracket
- 10. SFS SDA5 fastener
- 11. Click to Brick cladding profile
- 12. NVELOPE 90mm double fixed bracket
- 13. DCT Vulcanwool External Insulation



- 14. Internal Insulation
- 15. SFS SX3-48 Bi-metal SS fastener

Rainscreen Brick Facade

OPTION 2: Wall Build Up







Email: Info@dcafacade.com.au

Phone: 1800 177 187

www.dcafacade.com.au

