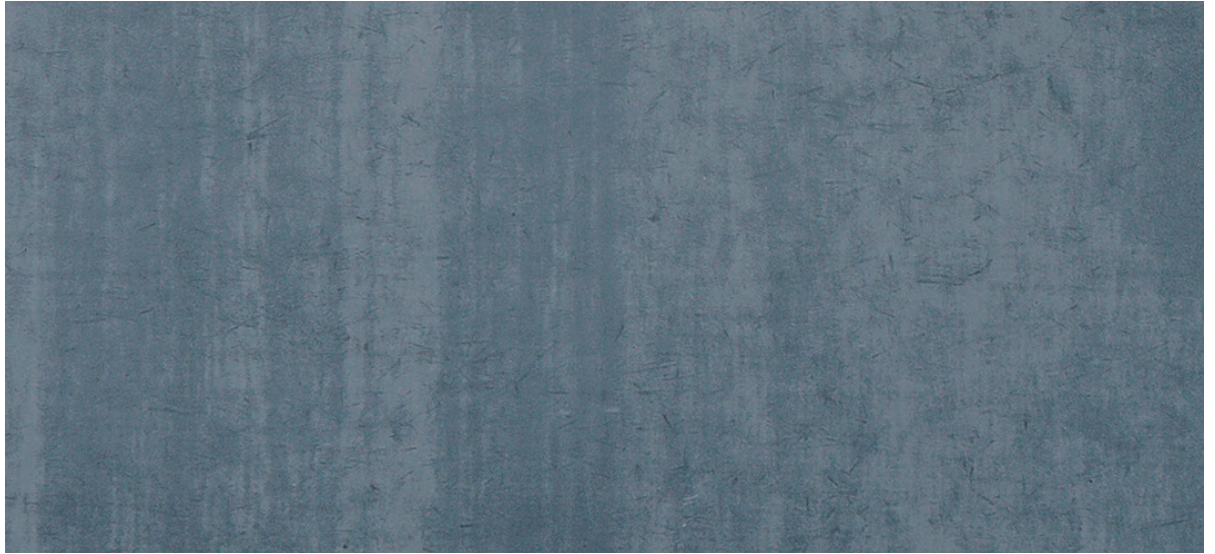


The natural imperfection and visual irregularity of the vintage panels give the facade a unique appearance and above all individuality, since no slab is like any other.



anthracite | matt

<b>PRODUCT</b>	concrete skin, öko skin
<b>WIDTH</b>	max. 1310 mm
<b>LENGTH</b>	max. 5000 mm
<b>THICKNESS</b>	13 mm
<b>COLOURS</b>	anthracite, liquid black, terra, walnut, ebony, oxide red, burgundy, merlot ( <i>custom colours on request</i> )
<b>SURFACE</b>	matt
<b>WEIGHT</b>	~ 30 kg/m <sup>2</sup>
<b>FIXING</b>	rivets, adhesive, undercut anchor, screws, öko skin hidden fix (only for öko skin)
<b>PRICE</b>	€€€

13 mm